

There may be occasions, although rare, where an SD Card may become faulty or damaged due to the high-use of constantly writing and overwriting video data. In these instances, Support may instruct you to replace the SD Card in your Driveri camera using a replacement card that would be shipped to you. This article is meant to help provide direction in how to complete this process.

## 1. Step 1

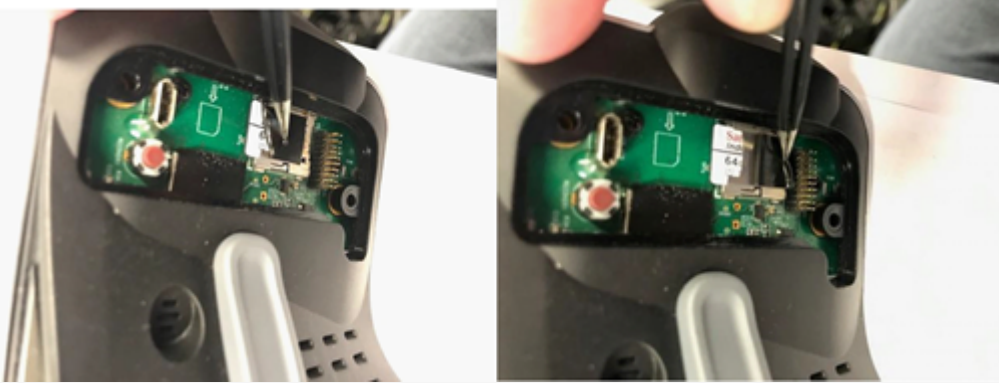
Remove the bottom cover of the Driveri device using a T10 security torx bit.



## 2. Step 2

Using tweezers, carefully lift the black tape up from the edge as shown in the picture below.



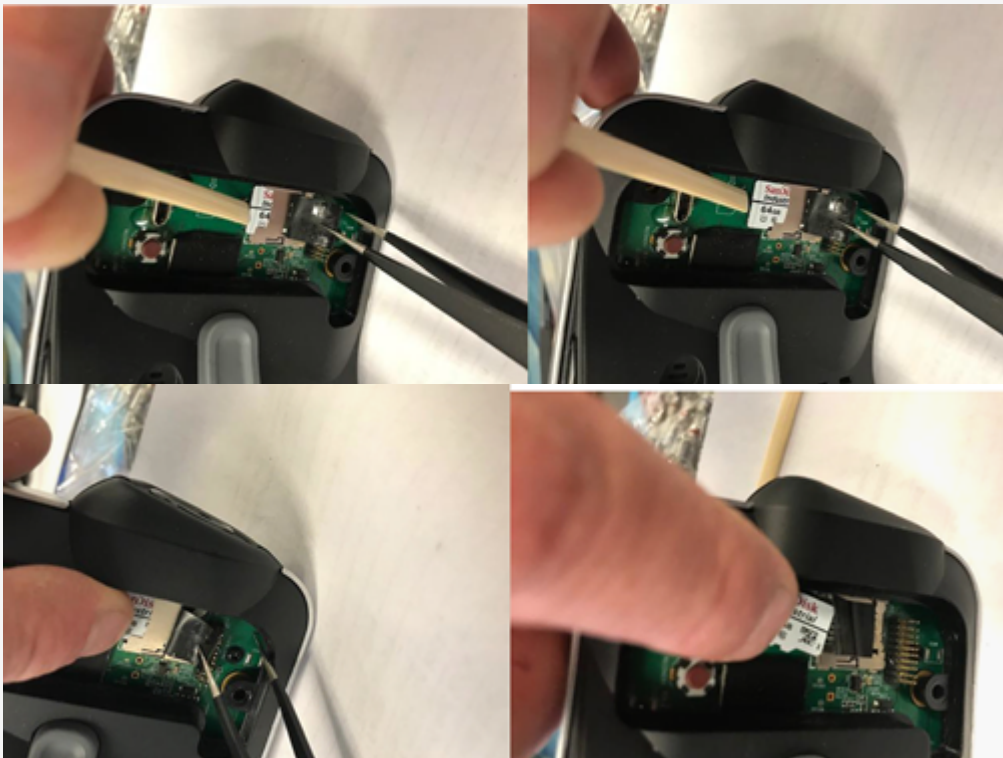


### 3. Step 3

Use a wooden stick or stiff object to carefully press the existing SD Card in until you hear/feel it click, then release it and it should be ready to pull or slide out. hen use your finger to slide it out only when it's in the "release" state or it will damage the SD Card holder itself.



**Note.** DO NOT PULL SD CARD OUT WITHOUT PUSHING IT IN FIRST SO IT IS IN THE "RELEASE" STATE.



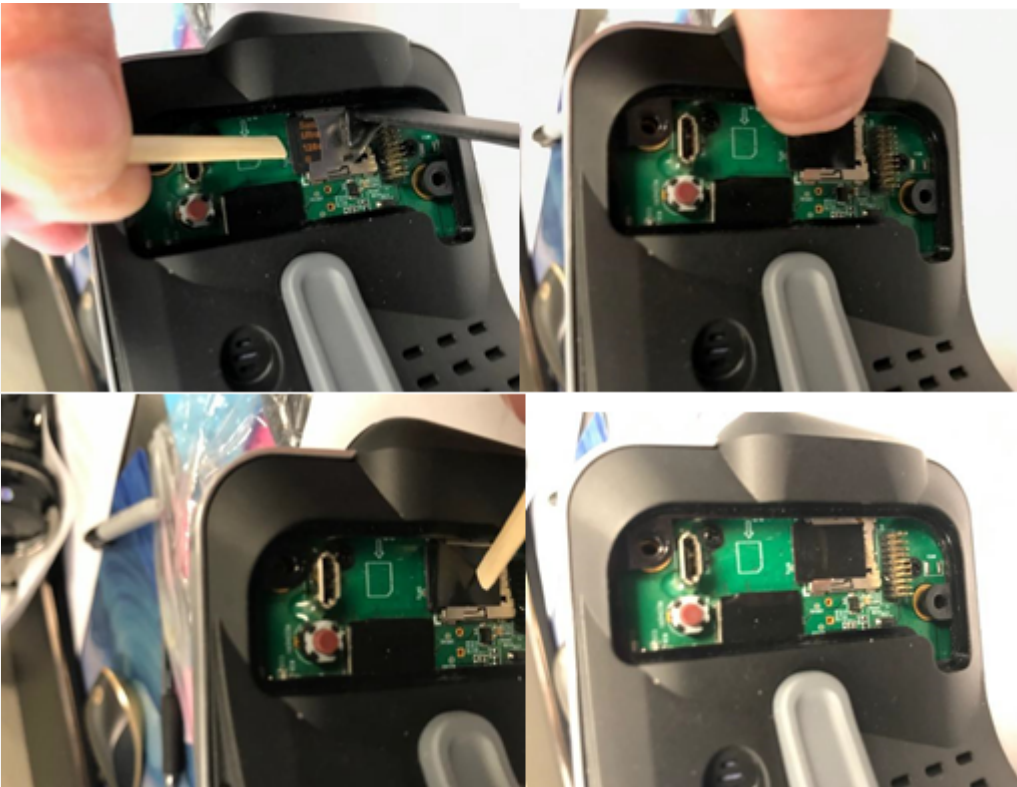
## 4. Step 4

Slide the new pre-formatted 128 GB SD Card in and press it in all the way until you hear/feel it click and then release it. Make sure it's locked in place.



## 5. Step 5

Once the SD Card is locked in place, put the black tape back on top of the SD Card & Holder. Press firmly with your finger to make sure the tape adheres to the SD Card and metal holder.



## 6. Step 6

Put the bottom cover back on the Driveri device and tighten the two screws.

