

Before You Begin

The installation kit contains the GO9™ device, diagnostic Pass-Thru cable, and one serialized cable tie.

Additional tools that you may need include an ink pen, dash panel removers, socket/screwdriver set, flush cutters, and tamper seal.

Installation Overview

The following steps provide an overview of the installation process:

1. Install Preparation.
2. Device Connections.
3. Device Mounting.
4. Add-Ons.
5. Verification and Registration.

Installation Steps

1. Installation Preparation.

1. Record the 12-digit serial number (ESN) on your registration card.



2. Device Connections.

There are three available methods to connect the device:

- Direct Plug-In
- Diagnostic Cable
- Hardwire

Direct Plug-in Instructions:

1. If installing directly into the OBD-II port, please perform the following before proceeding to **Step #5 for Verification and Registration**:
 - a. Locate the OBD-II Port and plug the device directly into the port.



- b. Secure the device to the OBD-II Port with a zip tie and ensure connection secure.



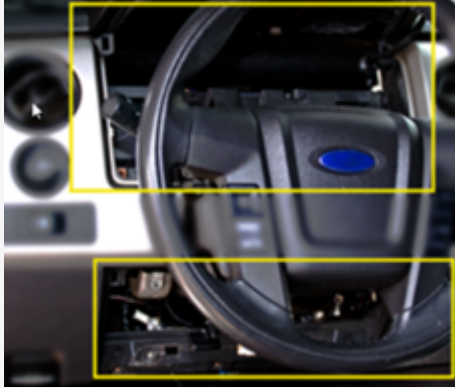
Note. If device lights do not begin to flash upon connection or do not go solid within 3-5 minutes, see [Frequently Asked Questions](#).



OR

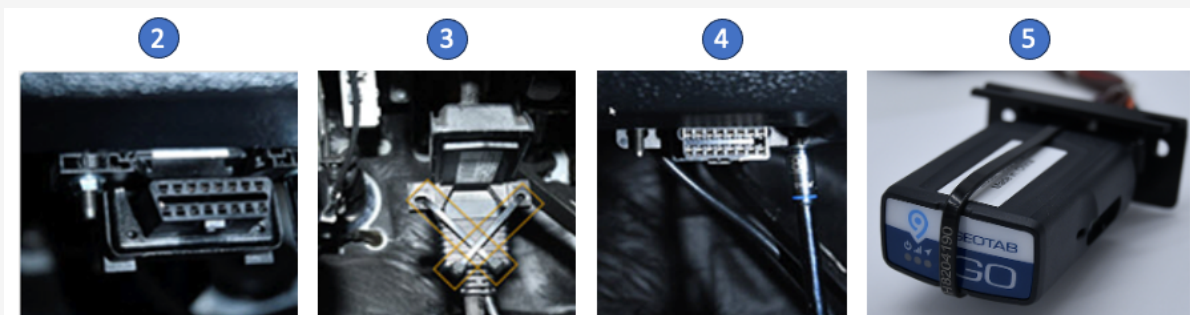
Diagnostic Cable Instructions:

1. Remove the dashboard panels for harness installation and device mounting.



With the vehicle Ignition Off and keys removed, complete the following steps:

2. Free up the existing Diagnostic port from its current location.
3. Connect the Pass-Thru Cable to the vehicle diagnostic port and cable tie.
4. Mount Pass-Thru Cable replacement port.
5. Connect Device to Pass-Thru Cable and cable tie connection point.



Note. For more detailed 16Pin and 9Pin installation guides, please follow the links below:
- [16Pin](#)
- [9Pin](#)

Alternate Cabling Connection

If you do not wish to plug directly into the port and you have one of the vehicle models listed below, please follow the applicable cabling installation directions using the links provided below.

- [Hino: 2016-2018](#)
- [Isuzu: 2017+](#)
- [Hino: 2019-2022](#)
- [2019+ Tesla Model S](#)

- Tesla: Model Y 2019+
- RP1226
- Mitsubishi: Fuso 2010-2021
- Mack: Specific 2006-2018 Models
- Mack: Specific 2019+ Models
- Volvo: 2004-2018
- Volvo: 2019+

OR

Hardwire Instructions:

Please click [here](#) for hardwire instructions.

3. Device Mounting.

1. Without any metal covering the device, cable tie the device as high within the dash as possible and ensure the serialized cable tie wraps around the device and the cable.



4. Add-Ons.

If you have any add-ons to your device installation, please complete the add-on installation prior to the

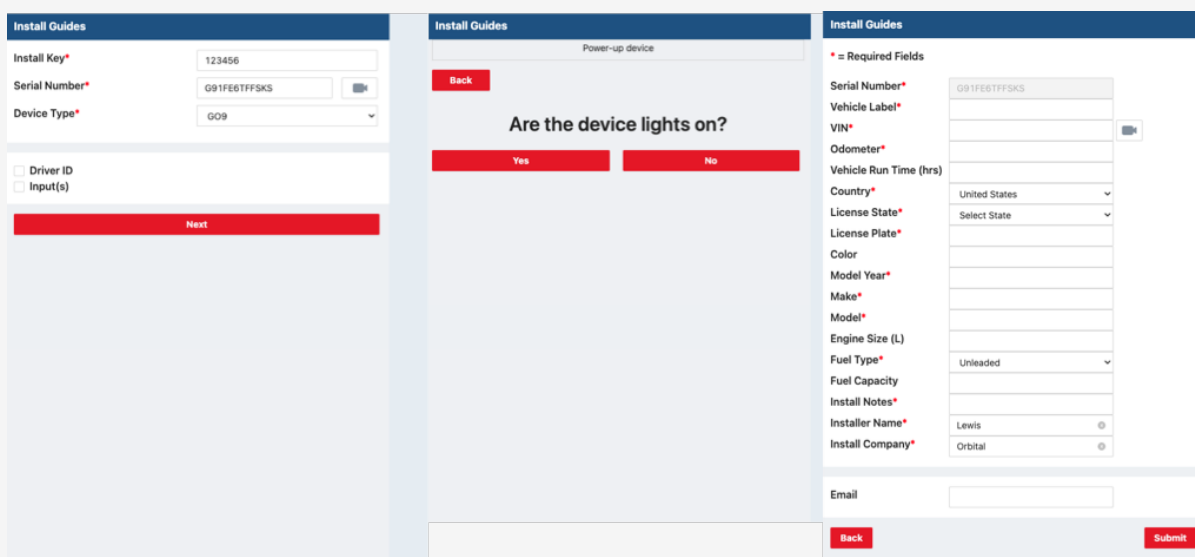
last step, Step #5. Verification and Registration.

Available Add-Ons:

- [nfcreadera \(Geotab Driver ID\)](#)
- [IOX-AUXM \(Geotab Input Monitoring\)](#)
- [Geotab Advanced Installations](#)

5. Verification and Registration.

1. Open the verifygps.gpsinsight.com web app on your computer or smartphone, enter your Install Key, Device Serial Number and select Device Type: 'GO9.'
2. Follow the instructions for verification and device registration.



The first screenshot shows the 'Install Guides' page with fields for 'Install Key*' (123456), 'Serial Number*' (G91FE6TFFSKS), and 'Device Type*' (GO9). Below these are checkboxes for 'Driver ID' and 'Input(s)', and a red 'Next' button.

The second screenshot shows a 'Power-up device' screen with the question 'Are the device lights on?' and two red buttons: 'Yes' and 'No'. A red 'Back' button is at the top left.

The third screenshot shows a 'Required Fields' form with various vehicle and installer information. Fields include: 'Serial Number*' (G91FE6TFFSKS), 'Vehicle Label*', 'VIN*', 'Odometer*', 'Vehicle Run Time (hrs)', 'Country*' (United States), 'License State*' (Select State), 'License Plate*', 'Color', 'Model Year*', 'Make*', 'Model*', 'Engine Size (L)', 'Fuel Type*' (Unleaded), 'Fuel Capacity', 'Install Notes*', 'Installer Name*' (Lewis), and 'Install Company*' (Orbital). There is an 'Email' field at the bottom. Red 'Back' and 'Submit' buttons are at the bottom.

3. Upon completion, reassemble the vehicle's dashboard, and give the registration card (if applicable) to your GPS administrator.