

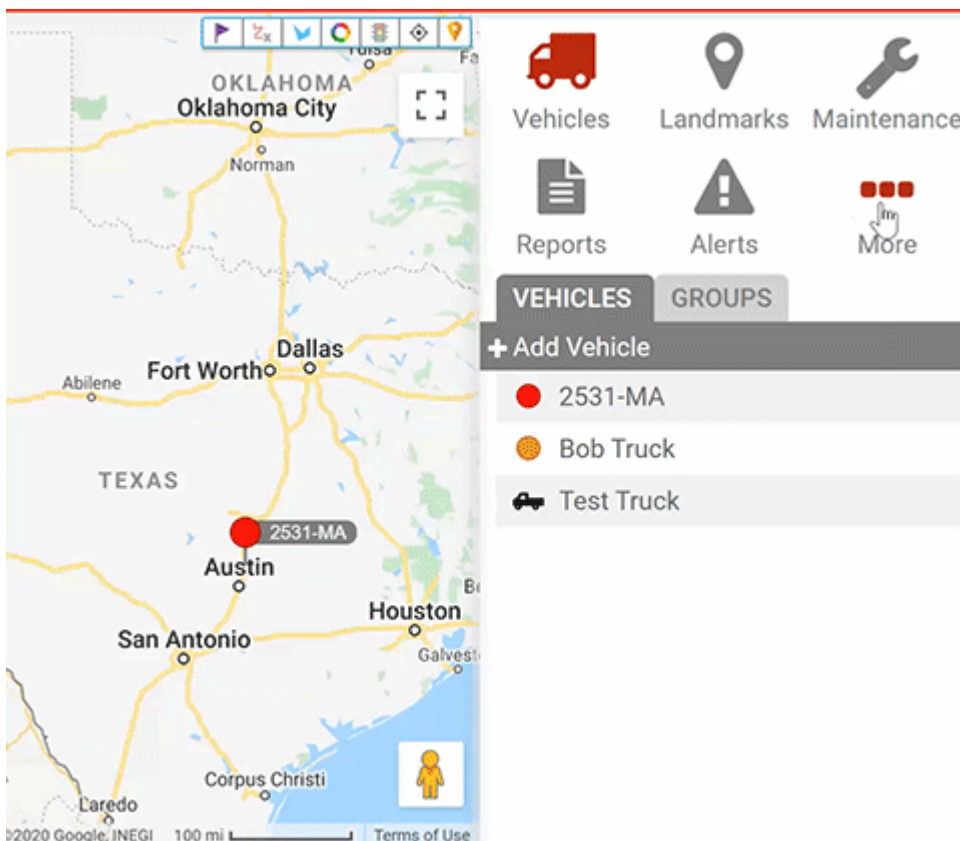
The User Manager feature provides a comprehensive view of information for users and allows you to edit details.

Edit User Details

Editing user details allows you to modify the details in a user's profile, such as timezone or email address.

To edit user details:

1. From the Menu, click **More**.
2. Click **User Manager**.
All current users will appear in the User Manager list.
3. Locate the user you want to modify, and click on their username.
The User Card associated with the user will appear to the left of the list.
4. From the User Card, click **Edit User** to add or edit information.
5. When finished modifying user details, click **Save**.



Delete User Details

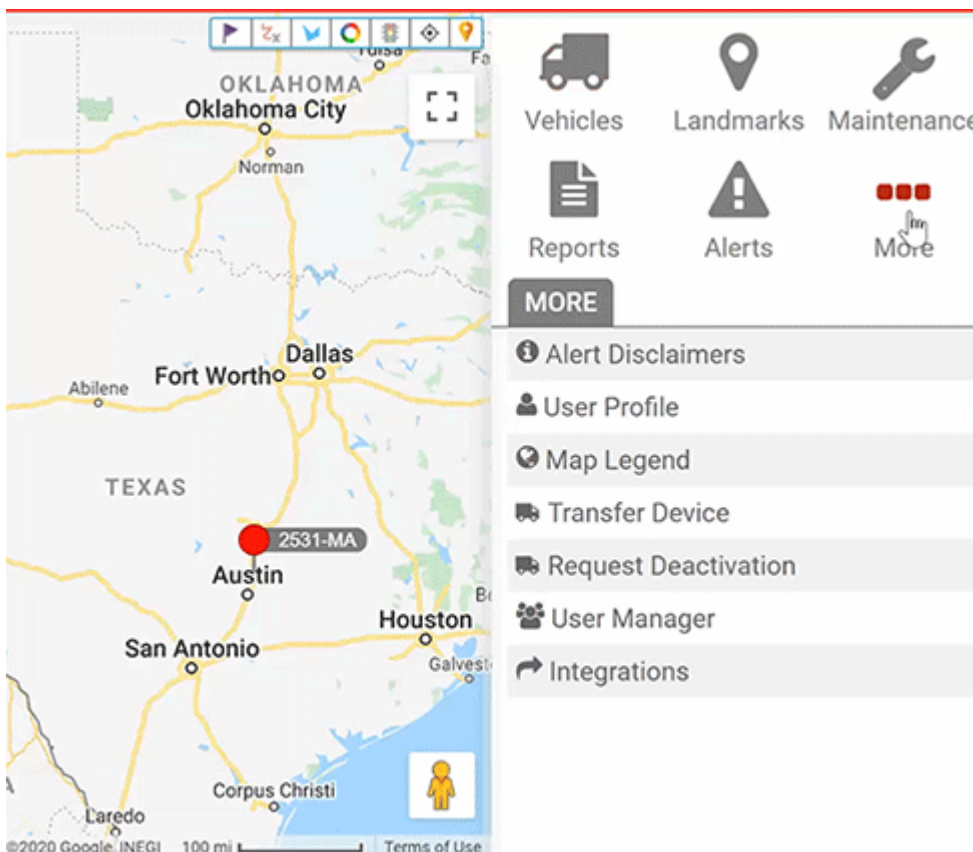
If a User needs to be removed from the user list, the account Admin can delete the user's profile.

To delete a user:

1. From the Menu, click **More**.

Link: <https://help.nuvo.solutions/docs/user-setup/editing-a-user/> Last Updated: November 9th, 2016

2. Click **User Manager**.
All current users will appear in the User Manager list.
3. Locate the user you want to delete and click on their username.
The User Card associated with the user will appear to the left of the list.
4. From the User Card, click **Delete**.
5. The Delete User card will appear, click **OK**.



The Manage Users and Groups page provides a comprehensive view of the information for users and allows you to edit details. You can also update user settings by way of spreadsheet import.

Filter the User List

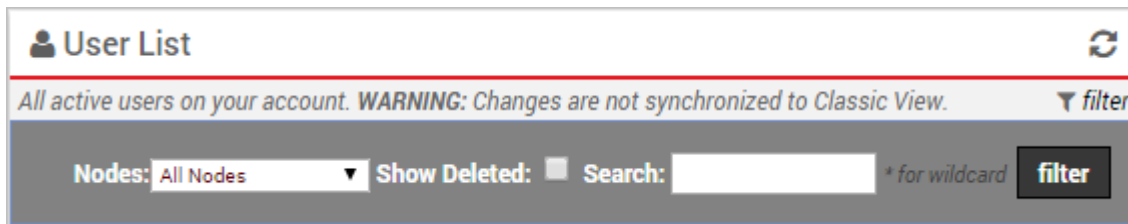
If your user list is long, you can use filter options to isolate a subset of users.

To filter the user list:

1. From the portal, hover over the **Account** menu, click **Manage Users**, and click **Open**.

The Manage Users and Groups page opens in a new browser tab.

Link: <https://help.nuvo.solutions/docs/user-setup/editing-a-user/> Last Updated: November 9th, 2016



1. Choose from the following filter options:

- **Nodes:** Show only users who belong to a particular hierarchy node (if applicable).
- **Show Deleted:** Show only users whose profiles have been deleted from the account.
- **Search:** Users that match a description. Use * as a wild card before or after a string of characters.
- **Show All** Select the check box to show all records on a single page (may take more time to load).

2. Click **Filter**.

The user list shows only the users that match your filter criteria.

Edit User Details

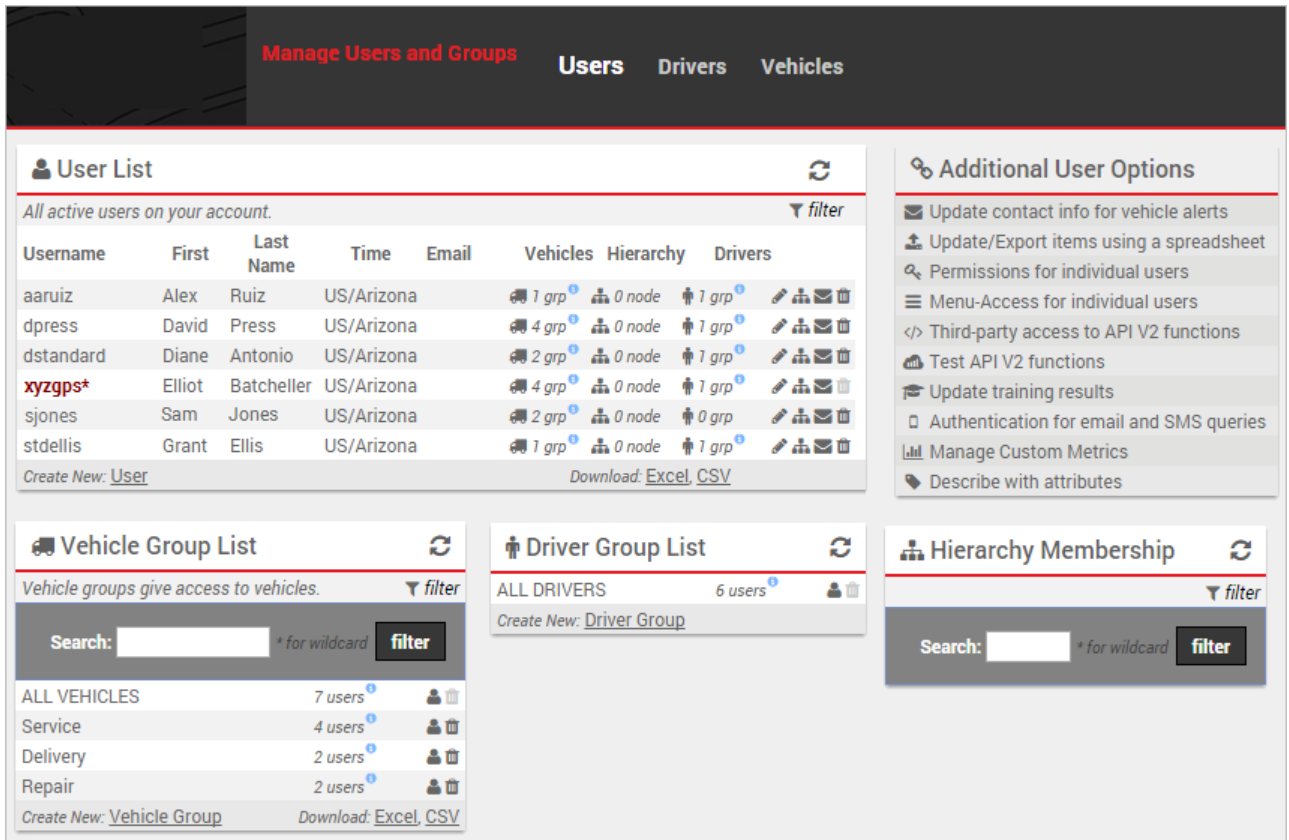
Editing user details allows you to modify details about the user's profile, such as **timezone** or email address. The Manage Users and Groups page also allows you to **modify user access**.

To edit user details:

1. From the portal, hover over the **Account** menu, click **Manage Users**, and click **Open**.

The Manage Users and Groups page opens in a new browser tab.

Tip! You can also export user information from the bottom of this page or update user details in a batch process using **spreadsheet import**.



Manage Users and Groups **Users** Drivers Vehicles

User List

All active users on your account. filter

Username	First	Last Name	Time	Email	Vehicles	Hierarchy	Drivers
aaruiz	Alex	Ruiz	US/Arizona		1 grp	0 node	1 grp
dpress	David	Press	US/Arizona		4 grp	0 node	1 grp
dstandard	Diane	Antonio	US/Arizona		2 grp	0 node	1 grp
xyzgps*	Elliot	Batcheller	US/Arizona		4 grp	0 node	1 grp
sJones	Sam	Jones	US/Arizona		2 grp	0 node	0 grp
stdellis	Grant	Ellis	US/Arizona		1 grp	0 node	1 grp

Create New: [User](#) Download: [Excel](#), [CSV](#)

Additional User Options

- Update contact info for vehicle alerts
- Update/Export items using a spreadsheet
- Permissions for individual users
- Menu-Access for individual users
- Third-party access to API V2 functions
- Test API V2 functions
- Update training results
- Authentication for email and SMS queries
- Manage Custom Metrics
- Describe with attributes

Vehicle Group List

Vehicle groups give access to vehicles. filter

Search: * for wildcard filter

ALL VEHICLES	7 users
Service	4 users
Delivery	2 users
Repair	2 users

Create New: [Vehicle Group](#) Download: [Excel](#), [CSV](#)

Driver Group List

ALL DRIVERS 6 users

Create New: [Driver Group](#)

Hierarchy Membership

Search: * for wildcard filter

1. Locate the user you want to modify, and click **Edit** (🔍)
2. From the Edit User Details window, add or **edit information**.
3. When finished modifying user details, click **Save Changes**.

Delete Password Reset Requests

Within the User List, one of the following indicators may exist on a username:

- 🔑 - The user requested a password reset via the Forgot Password link on the login page and is awaiting a confirmation code via email or SMS. (If the reset instructions aren't followed within a week, this status automatically expires.)
- 🔒 - An administrator requested a forced password reset via the Edit User Details window. Reset instructions are automatically sent to the user's email address.

The status is removed if the user follows the reset instructions, if the status expires (applies only to user-invoked requests), or if an administrator manually **deletes the reset request**. In the case where an administrator forced a password reset and you see a "lock" icon, a user is unable to log into the portal with his or her old password. In the case of a user-requested password reset, the user can still use the old password until the reset is complete.

To delete a password reset request:

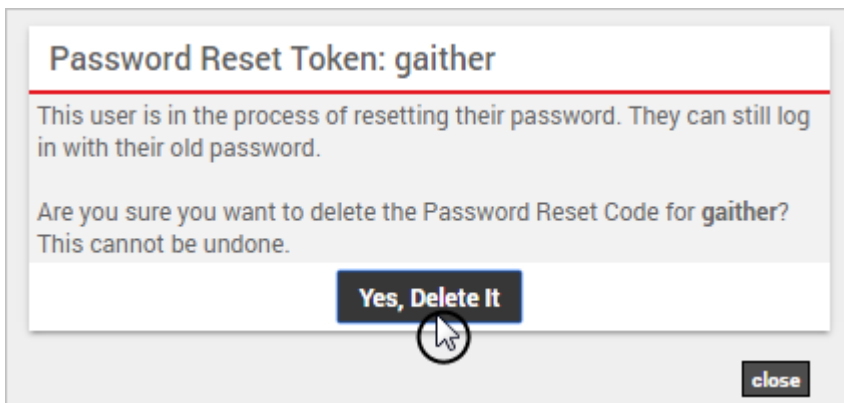
1. From the portal, hover over the **Account** menu, click **Manage Users**, and click **Open**.

The Manage Users and Groups page opens in a new browser tab.

1. Locate the user with a password reset request (either notated with the red key or lock icon), and click the username.



1. In the Password Reset Token verification window, click **Yes, Delete it**.



The reset request is removed from the user's profile, and the user can log into the portal again with his or her old password without setting up a new one.