

Meeting the Portal – New & Classic

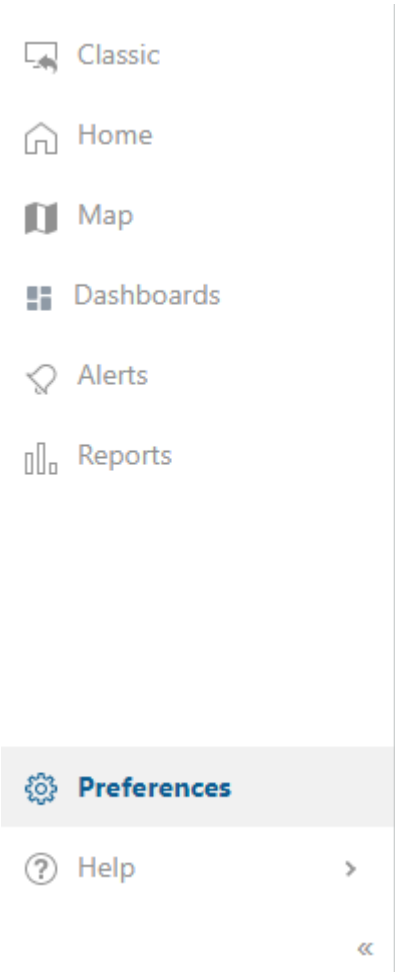
Once you have logged in with your credentials, the new Portal is displayed by default.

## New Portal

We have a fresh, new Portal Homepage and Map for you with a new UI aimed to improve your fleet tracking experience.

## Using the Portal Navigation

Use the Navigation menu on the left-hand side of the screen to navigate to the following areas in the portal: Homepage, the Map, User Preferences page or to the Help Center.



- Classic (Portal)
- Home (Homepage)
- Map

# New Homepage and Map

Link: <https://help.nuvo.solutions/docs/getting-started/new-homepage-and-map/> Last Updated: June 6th, 2019

- Dashboards
- Alerts
- Reports
- Preferences
- Help (Help Center)

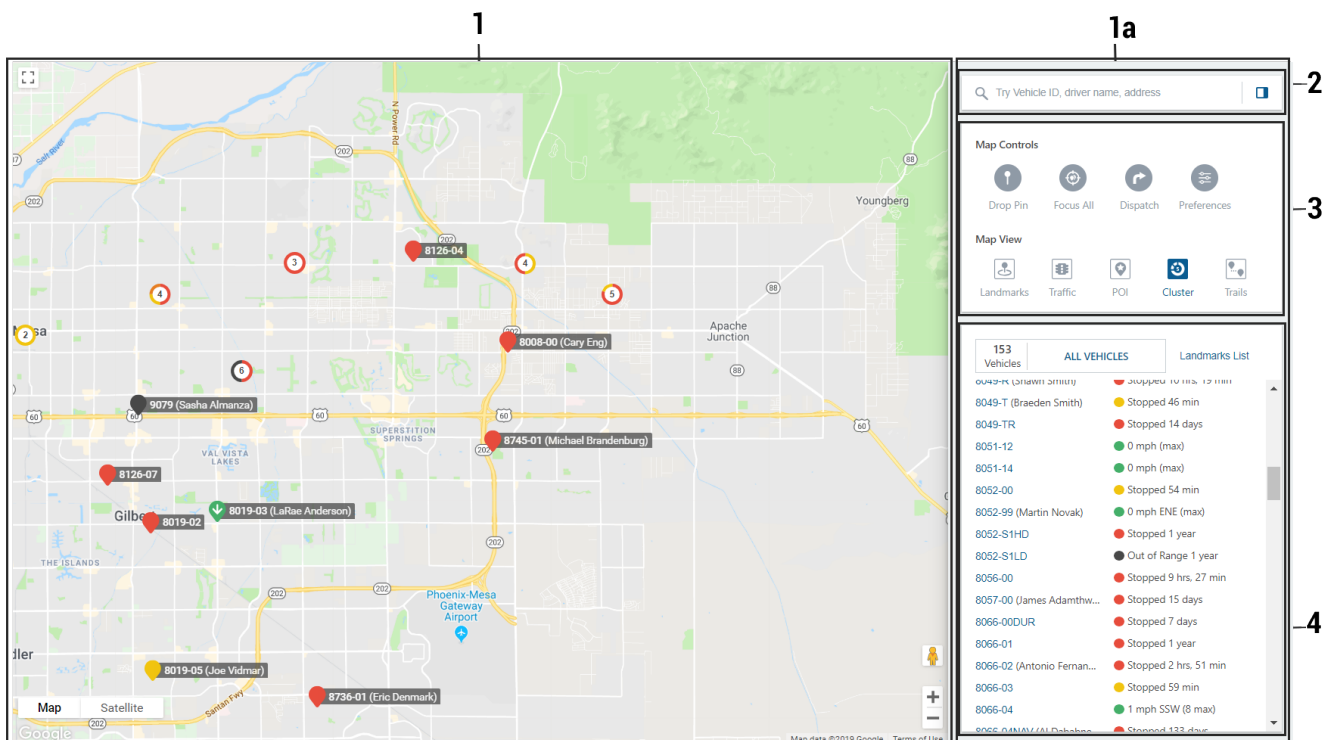
## ► How to navigate:

Click **Home** to display the Homepage, click **Map** to display the Map, or click **User Preferences** to display the User Preferences page.

## ► How to expand or collapse the Navigation menu:

You may also expand or collapse the Navigation menu by clicking the **Expand** or **Collapse** button respectively.

## ► How to navigate the Map:



## Map Features

The Map has the following features:

Number	Feature	Description
1	Map	<p>Click on a vehicle or landmark on the Map to open the associated information card (appears on the right-hand side of the screen).</p> <p><b>Note.</b> If any vehicles are unavailable due to unreliable data, an Unavailable button is displayed on the Map (to the left of the Map Panel). See Unavailable List below for additional information.</p>
1a	Map Panel	<p>Use the Expand/Collapse button (on the right side of the Search Field) to expand or collapse the Map Controls Panel. The Map Control Panel includes the Search Field, Map Controls/View, and Vehicle/Landmarks List.</p>
2	Search Field	<p>Type a search term in the box (vehicle ID, driver name, landmark, address/Point of Interest) to center the map over your query.</p>
3	Map Controls/View	<p>Perform basic map tasks such as dropping a pin, sending a dispatch, and more and set your map view preferences (e.g., show/hide Points of Interest, landmarks, traffic, etc.).</p>
4	Vehicles/Landmarks List	<p>View your vehicles, hierarchies, vehicles groups (as selected in the Data Source Selector), or Landmarks.</p>

## ► How to use the User Preferences page:



**Note.** The link to open the User Preferences page and the User Preferences page itself are only available to users with User Admin permission.

The User Preferences page allows you to set your Dashboard preferences for measurement unit (US (Standard) or Metric), time zone, default account landing page (Homepage, Map (New!), Map (Classic) or Classic Dashboard), and side-bar theme (dark or light). Additionally, you can logout from this page.

## User Preferences

Measurement Units	<div>US (Standard) ▼</div>
Time Zone	<div>US/Arizona ▼</div>
Default Page	<div>Map (New!) ▼</div>
Side-bar Theme	<div><div>Dark</div><div>Light</div></div>
<div>Logout</div>	



**Note.** Any preferences set in the User Preferences page will override preferences set in the Classic User Preferences tab.

## ► How to get to the Help Center:

Click **Help Center** to open a new browser tab displaying the Help Center.



**Note.** We are also providing access to our Classic Portal. Please see “Classic Portal” for more information.

## Using Your Resources

Use the following links to learn how to use the new Homepage and Map with helpful articles and videos:

- [About the Homepage](#)
- [About the Map](#)
  - [Using Map Controls and Map View](#)
  - [Using the Dropped Pin Card](#)
- [Using the Vehicles and Landmarks List](#)
- [Using the Vehicle Card](#)

- [Using the Landmark Card](#)

## Returning to Classic

### Classic Portal

If you would prefer to use the Classic Portal, you still can!

#### ► **How to get back to Classic:**

Simply click **Back to Classic** from the Navigation on the left-hand side of the screen to display the Classic Portal.

See [Getting Started](#) for tips for beginners using the Classic Portal.