

If you have a vehicle that has inputs set up, you can track them on your map, alerts, and reports!

## Inputs on Map

To show Vehicle Inputs on your current map, make sure you have your map preferences set up to show Input Status.

### ► To check if your preferences are set to show inputs:

1. Navigate to the new map.
2. In the upper right-hand corner, click the Map Preferences icon.
3. Under the **Map Markers** section, make sure the **Show Input** status is checked.



**Note.** Anytime an input is currently engaged, you will see a star icon on the vehicle's label.

4. If you click the vehicle label, the vehicle card will appear and show you the vehicle's inputs and which inputs are engaged.

## Inputs on Trip History

Capturing inputs in trip history will help you understand what actually occurred during a vehicle's trip, which can help with safety initiatives.

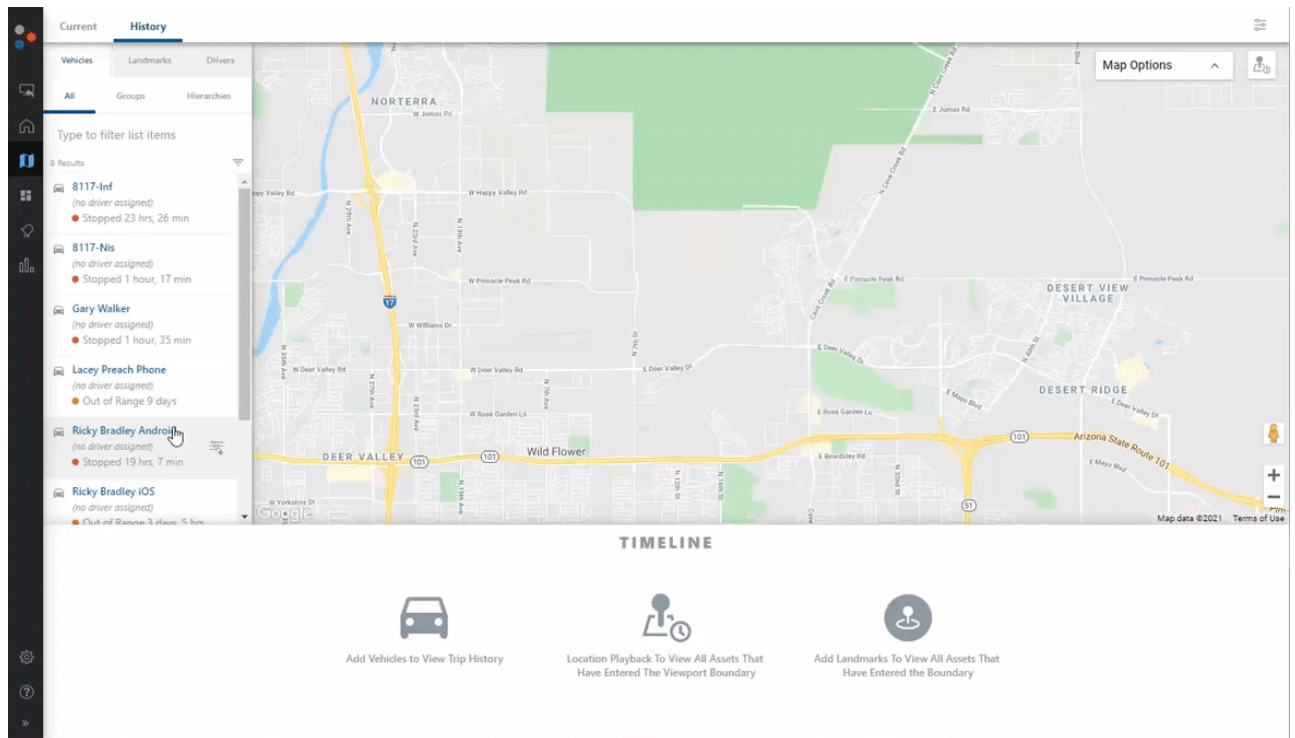
### ► To see input details on your trip history:

1. Navigate to your map and click **History**.
2. Select a vehicle to add to your map and time scrubber.
3. Click **Map Options** in the right corner of your map view.
4. Check the **Inputs** box.



**Note.** You can expand your inputs and filter out inputs you don't want to see.

5. When you are looking at a historic trip for a vehicle, you will see an orange line on your map and in your scrubber to show an input was engaged.



## Inputs on Reports and Alerts

You can add PTO and Input data to certain reports and alerts to provide more insight into vehicle activity.

### ► Reports with input data:

- Drive Time Summary Report
- Switch Alerts Report

### ► Alerts with input data:

- Asset Inputs Alert
- Idle Time Alert: option to exclude PTO time from idle time
- Speeding Alert: option to only alert when input has a status
- Switch Alert

## Frequently Asked Questions

Question	Answer
Which devices are compatible with Inputs?	The following devices can be set up with inputs: GO9s GPSI-5000s GPSI-4100s GPSI-4000s GPSI-3900s AT-3000s
How many input connections can you have on one device/vehicle?	The number of input switches varies based on the device type: GO9s = 4 inputs GPSI-5000s = 4 inputs GPSI-4100s = 4 inputs GPSI-4000s = 4 inputs GPSI-3900s = 4 inputs AT-3000s = 2 inputs