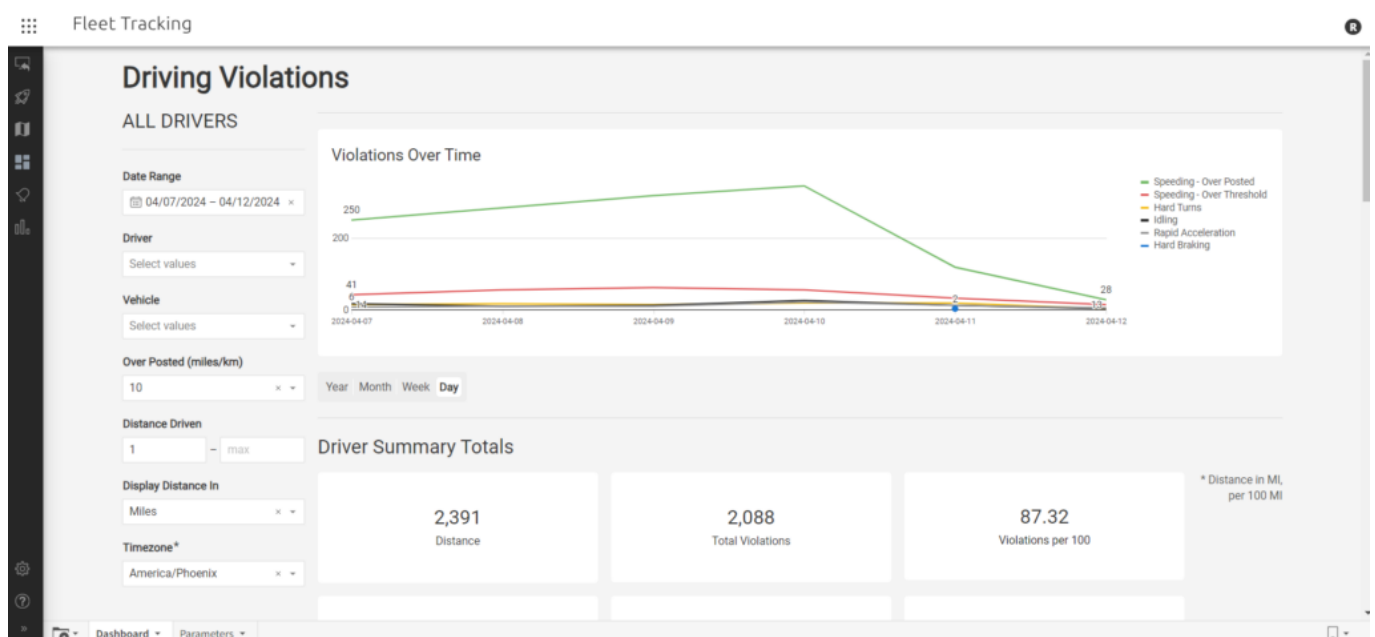


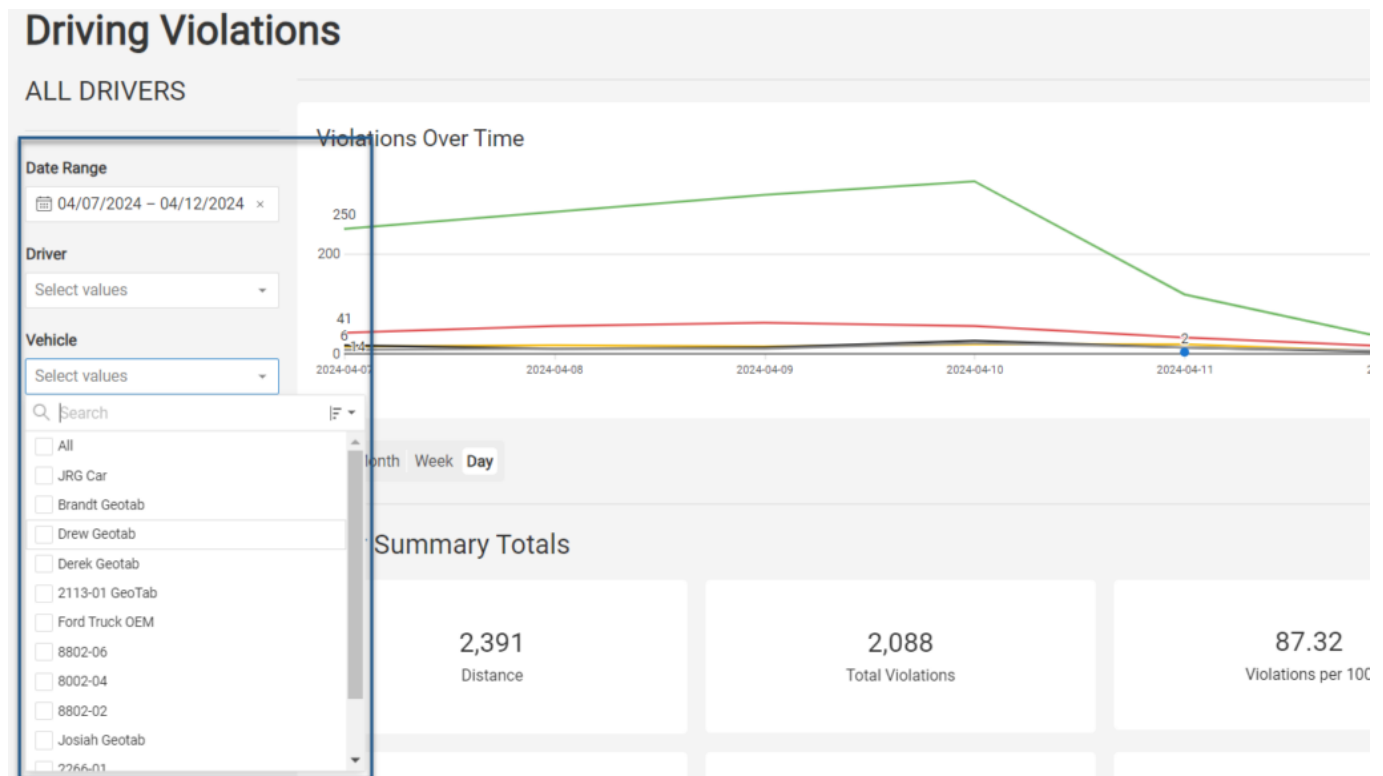
The Driving Violations Report provides interactive graphs, summary totals, and detailed data showing driving violation events filtered by vehicles, vehicle groups, vehicle hierarchy, driver, driver groups, and driver hierarchy. You can select a time frame of yesterday, week to date, month to date, last seven days, last 30 days, or a custom time frame. Additionally, you may select a timezone for the report. This report is available to customers with PNP, GPSI-3900, and other supported devices.



Note. The Driver feature is available with the Driver Management add-on and the Hierarchy feature is available with the Advanced Administration add-on only. If you are interested in learning more, please contact your Account Manager.



Note. If a vehicle exceeds the threshold entered, it will count as a Speeding - Over Posted Speed event on the report.



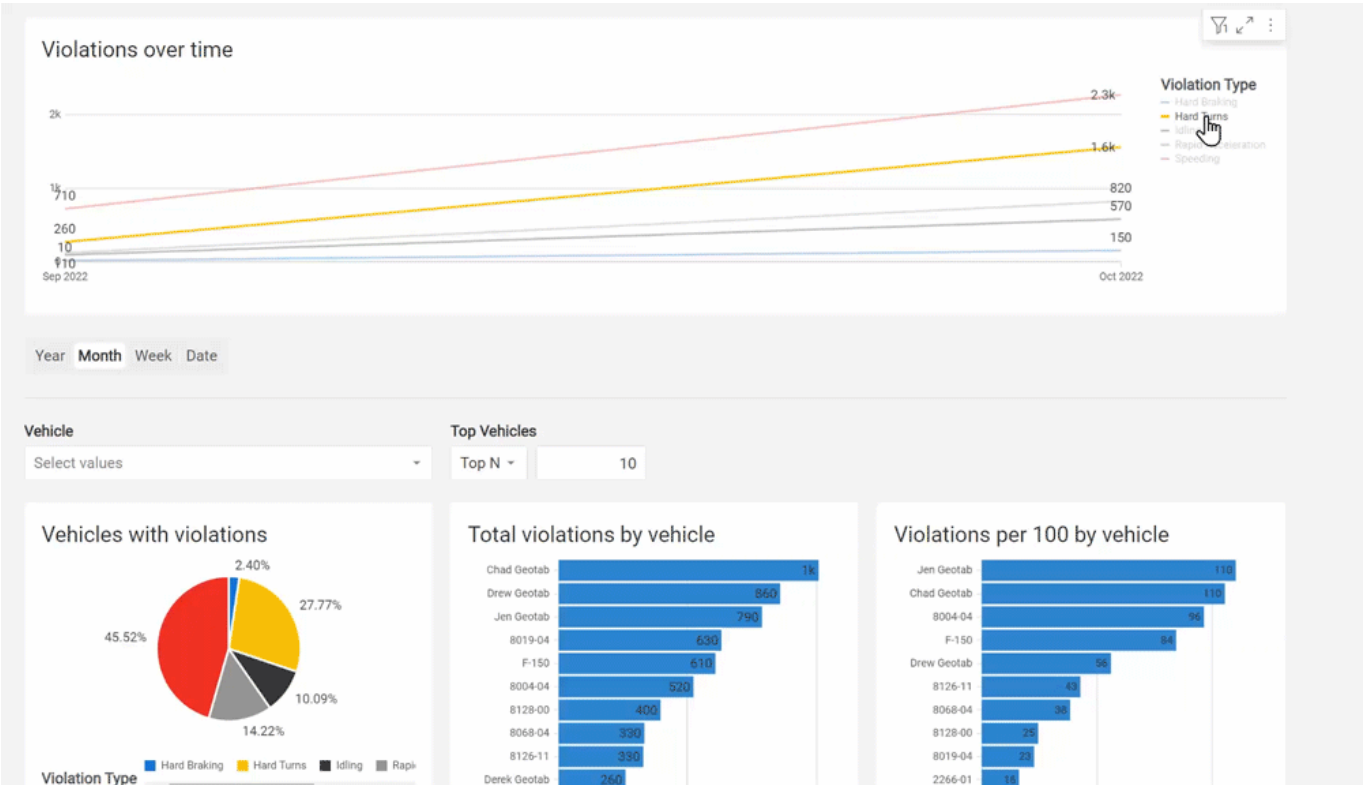
Violation Types

The violation types shown in this report include:

- Speeding – Over Posted
- Speeding – Over Threshold
- Hard Braking
- Hard Turns
- Idling
- Rapid Acceleration

Interactive Graphs

There are four interactive graphs offered in the report. All graphs offer filter (except Vehicle with Violations), sort, maximize element, download (CSV, Excel, PNG), and refresh options directly from each graph.



Interactive graphs present in the report include:

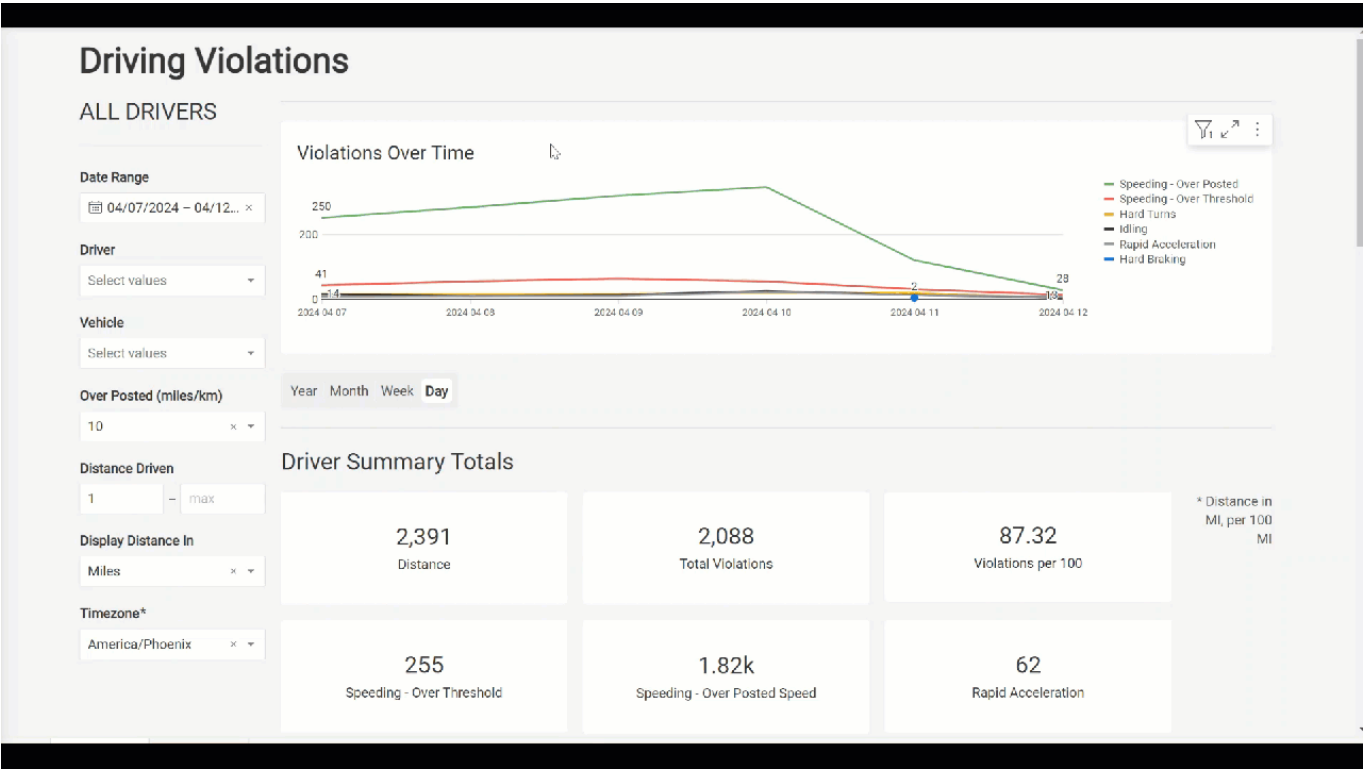
Graph	Description
Violations over time per type	Shows violations by type over the time window selected. Hover over the line graph to see a count of violations per type. Hover over the violation types listed on the right to focus on the selected violation type.
Vehicles with violations	Shows the percentage of occurrences of each violation type from the total count of violations over the time window selected in a pie chart. Hover over the pie chart sections to see the violation type count.
Total violations by vehicle	Shows the top 10 vehicles with the most total violation counts in the report time frame in a bar graph. Hover over a bar to see the vehicle identifier and the total number of violations.
Violations per 100 by vehicle	Shows a normalized overview of the total number of violations for the top 10 vehicles with violations, normalized per 100 miles and listed in order from the most (top) to the least (bottom) in a bar graph. The normalized chart allows you to more accurately compare driving behavior among vehicles and look for trends. Hover over a bar to see the total number of violations per 100 miles reported for that vehicle.

Driver Summary Totals

This section of the report provides vehicle summary totals for the selected data source and time frame for the following areas:

- Distance
- Total Violations
- Violations per 100 miles
- Speeding – Over Threshold
- Speeding – Over Posted Speed
- Hard Braking
- Hard Turns
- Idling
- Rapid Acceleration

All driver summary total sections offer maximize element, download (CSV or Excel), refresh data and copy to clipboard options.



Report Details

The report details provides line items for Driver Summary and Driver Events of the total number of violations for each vehicle included in the report.

Driver Summary

The Driver Summary detail section lists violation events by driver, vehicle displaying vehicle identifier, VIN,

Using the Driving Violations Report



Link: <https://help.nuvo.solutions/docs/about-the-reports-page/using-the-driving-violations-report/> Last Updated: October 25th, 2022

distance, violations per 100 miles, hard braking, hard left turn, hard right turn, hard turns, idling, rapid acceleration, speeding – over threshold, speeding – over posted, and violation event totals. All columns can be sorted in ascending, descending, or custom order, and offer column details to view high-level data contained in the column.

Driver Summary

Driver	Vehicle	VIN	Distance	Violations per 100 (MI/KM)	Hard Braking	Hard Left	Hard Right	Hard Turn
Anderson, Trent - 927	8019-02		180.3 mi	7	0	0	0	0
Campbell, Josiah	Josiah Geotab		40.9 mi	110	0	0	0	0
Frisella, Scott	2246-01		133.9 mi	20	2	0	0	0
Gosselin, Joe - drv_jgosselin	JRG Car		278.3 mi	197.99	0	0	0	0
Hogan, Sean	8021-02		90.1 mi	1.11				
LeSueur, Aimee - testdriver33	8002-04		187.5 mi	52.27				
LeSueur, Drew - dl1112	Drew Geotab		423.6 mi	82.39				
Little, Zach	Derek Geotab		138.0 mi	179.71				
Mars, Joe - jmars	2279-02		3.1 mi	0.00				
Mortensen, Tyler - tm0703	Ford Truck OEM		192.5 mi	44.16				
Murphy, Elisa	8802-05		72.9 mi	0.00				
Smithson, Lily	8802-06		48.9 mi	226.99				

16 rows – 16 columns

Column Details

ABOUT

123 Violations per 100 (MI/KM)

f_x [Driver Events by Day (grouped)/Violations per 100 Miles]

TOP VALUES

0.00	3
1.11	1
7.76	1
20.16	1
44.16	1
44.86	1
52.27	1
82.39	1
105.60	1
110.02	1
148.99	1

SUMMARY

Values	100.0%	16
Nulls	0.0%	0
Row count	100.0%	16
Distinct values	87.5%	14

STATISTICS

Minimum	0.00
25th percentile	6.10
Median	48.56
75th percentile	119.59
Maximum	226.99
Average	76.33
Standard deviation	77.03
Variance	5,932.90

Learn more about Columns

Driver Events

The Driver Events detail section lists violations by event occurrence displaying date, time, driver, vehicle name, VIN, violation type, speed over limit, speed, vehicle color (if supplied), vehicle make (if supplied), vehicle model (if supplied), model year, and data source. All columns can be sorted in ascending, descending, or custom order, and offer column details to view high-level data contained in the column.

Driver Events

VIN	Violation Type	Speed Over Limit	Speed	Speed Limit	Color	Make	Model	Model Year	Data Source
	Speeding - Over	12	77	65	White	Ford	C-Max Energi	2015	ALL DRIVERS
	Speeding - Over	10	50	40	Blue	Toyota	RAV4	2019	ALL DRIVERS
	Speeding - Over	10	50	40	Blue	Toyota	RAV4	2019	ALL DRIVERS
	Speeding - Over Posted	28	68	40	Unknown	Kia	Sedona	2019	ALL DRIVERS
	Speeding - Over Posted	11	41	30	Unknown	Kia	Sedona	2019	ALL DRIVERS
	Speeding - Over Posted	10	75	65	Unknown	Kia	Sedona	2019	ALL DRIVERS
	Speeding - Over Posted								
	Speeding - Over Posted								
	Speeding - Over Posted								
	Speeding - Over Posted								
	Speeding - Over Posted								
	Speeding - Over Posted								
	Speeding - Over Posted								
	Speeding - Over Posted								
	Speeding - Over Posted								

1,602 rows – 14 columns

Column Details

ABOUT

abc Violation Type

f_x [ds Driving Violations + Posted Speed/Event]

TOP VALUES

Speeding - Over Posted	1,347
Speeding - Over Threshold	255

SUMMARY

Values	100.0%	1,602
Nulls	0.0%	0
Row count	100.0%	1,602
Distinct values	0.1%	2

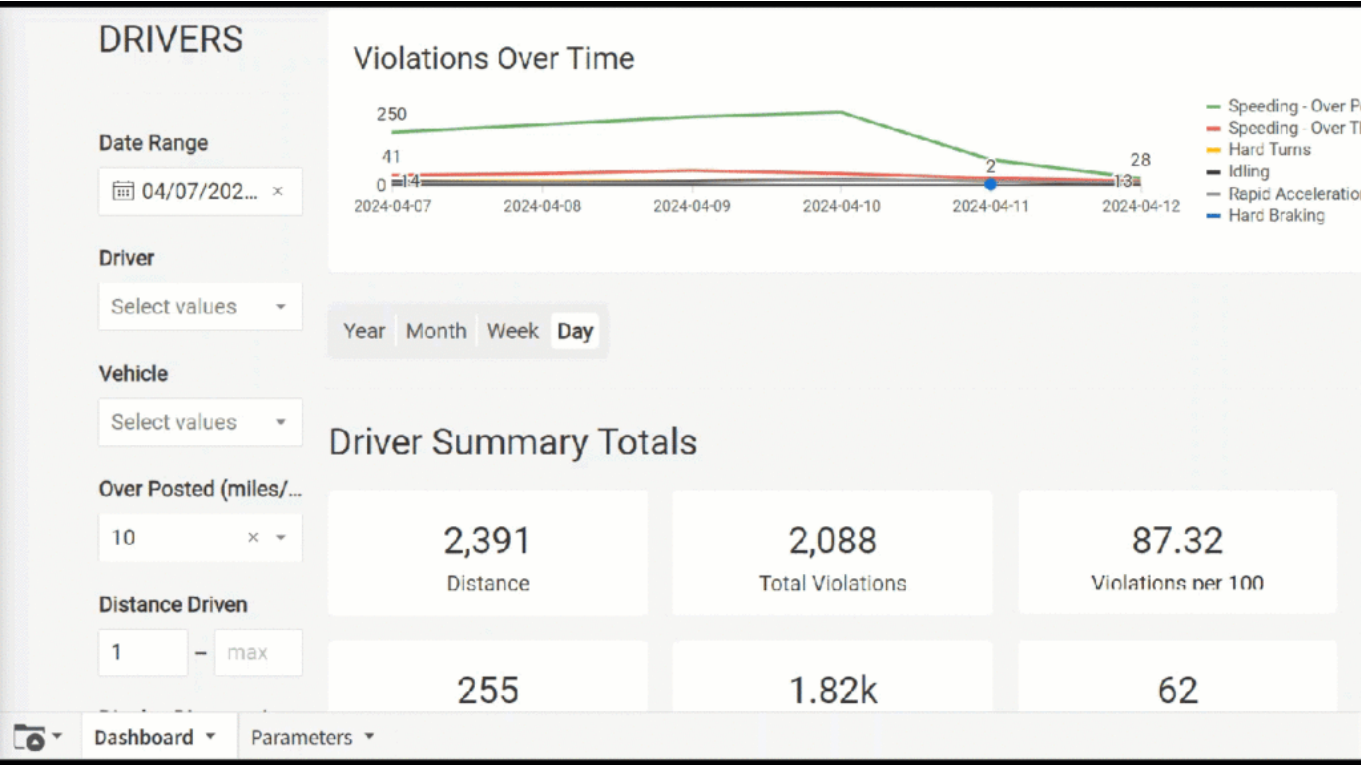
STATISTICS

Minimum	Speeding - Over Posted
Maximum	Speeding - Over Threshold

Learn more about Columns

Exporting the Report

This report can be exported via email in .xls format and attach a PDF in its entirety; however, please note that some of the available columns under the Vehicle Summary and Vehicle Events Report Details sections may be cut off due to the size of the columns.



This report also offers the ability to export sections of the report individually. Each section can be exported in CSV, Excel, JSON, PNG or PDF formats.

