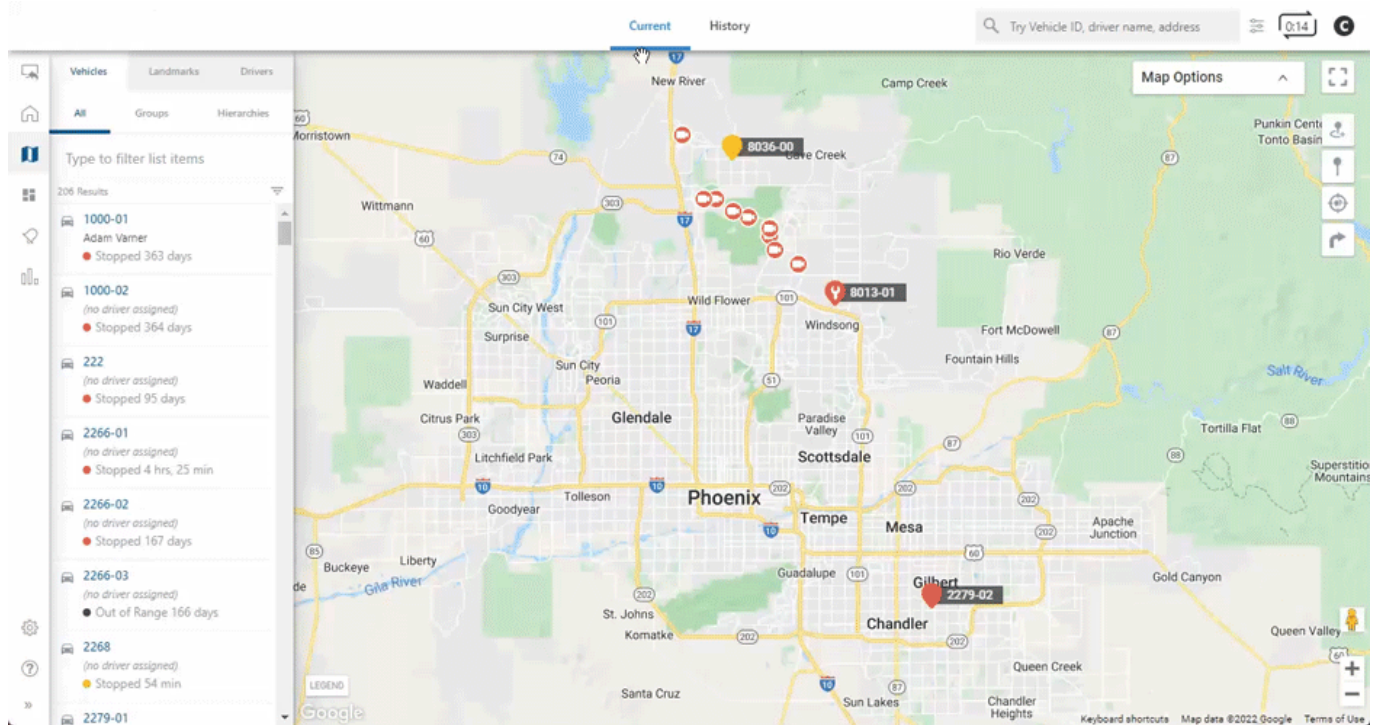





Use the location playback function to view all vehicles and assets that have entered a precise boundary on the map.

Viewing Location Playback

Location playback allows you to view your fleet's travel history within a specific area on the map.



► To use location playback:

1. From the map, click the History tab.
2. Zoom into the location of interest.
3. Click the Location Playback icon () in the top right corner of the screen.
The Time Range window will appear.
4. Select the date and time range (you can view up to a 3 hour time range).
5. Click View History.
6. If you would like to change the playback speed, click the settings button () in the right corner of the playback bar.
You can adjust the speed at: Normal, 2x, 4x, 8x, 16x and 32x.
7. Once selected, click the Play button () to view location playback.