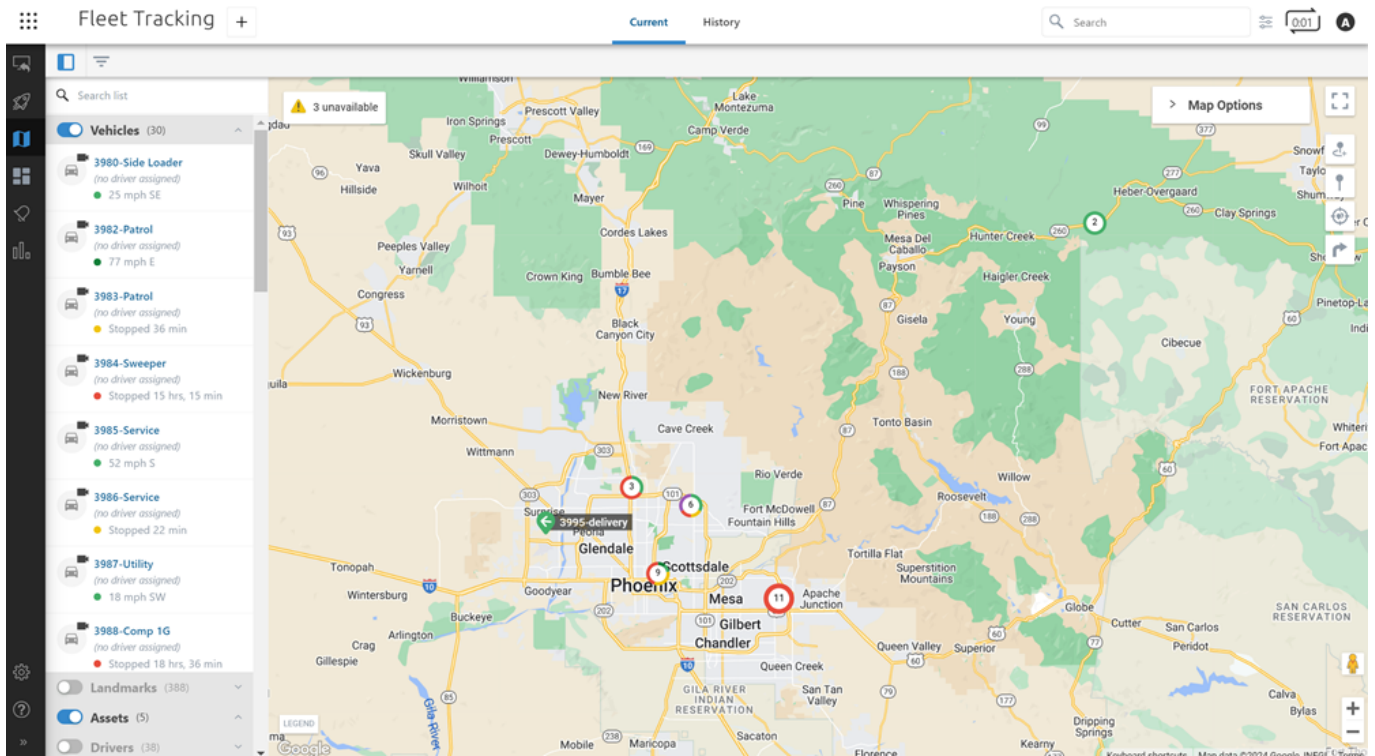


Link: <https://help.nuvo.solutions/docs/about-the-map-page/using-map-list/> Last Updated: June 4th, 2019


Filter the map by vehicles, landmarks, assets, and drivers in your fleet using the Map Lists.

Note. The Driver feature is available with the Driver Management add-on. Please contact your Account Manager if you would like additional information.



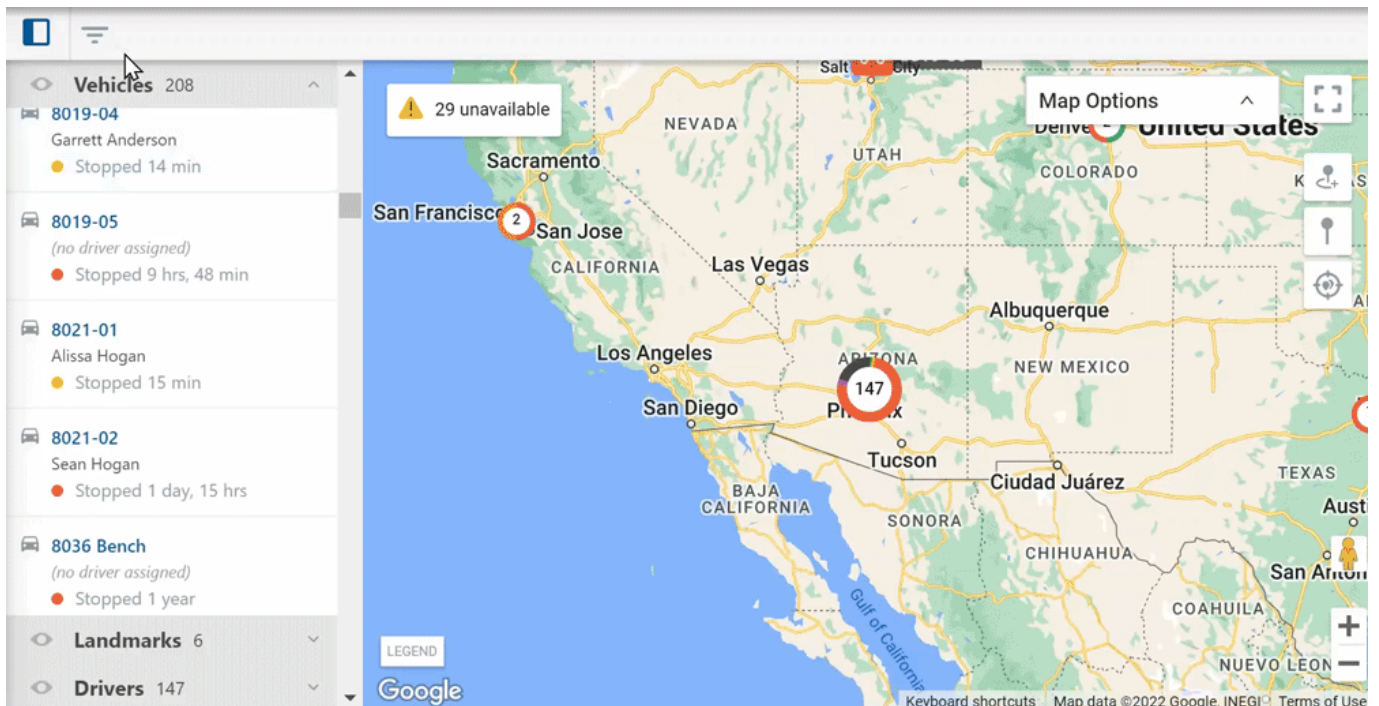
You may also further filter returned results by:


- **For Vehicles:** hierarchy, group, attribute, or status
- **For Landmarks:** group or color
- **For Assets:** hierarchy, group, attribute, status, or device
- **For Drivers:** group or hierarchy

To do so, click on the Filter icon () and use the drop-down windows to select your filter for the applicable category and click **View Results**. To clear all selected filters, click **Clear Filters** or to clear individual filters, click the X for the corresponding filter.

Note. Additionally, you may filter the map to hide unavailable vehicles and/or out-of-range vehicles.

Link: <https://help.nuvo.solutions/docs/about-the-map-page/using-map-list/> Last Updated: June 4th, 2019

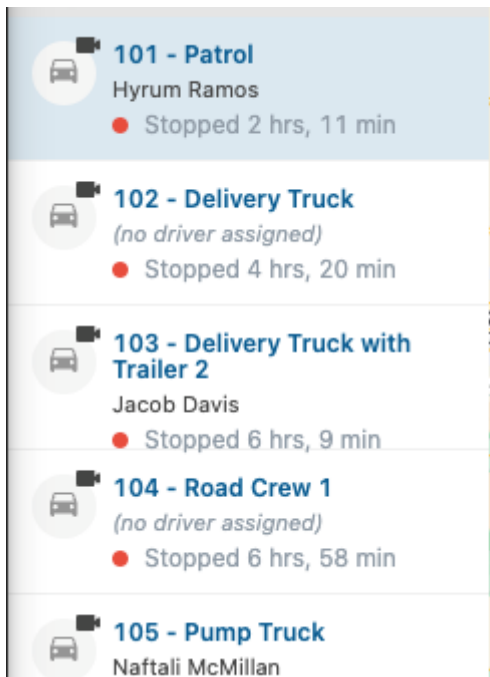


Note. You can collapse the Map List by clicking on the Collapse icon (). If you would like to expand the Map List, click on the icon again.

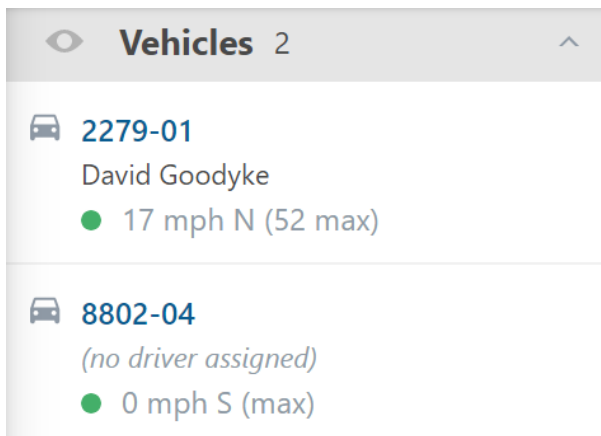
Using the Vehicle List

The Vehicle List displays all vehicles, or filtered vehicles if you've filtered the map by vehicle. Vehicles are displayed by Vehicle ID. The assigned driver (if applicable), current status, and time the vehicle has been in the status or speed (if moving) display under the Vehicle ID. A camera icon indicates that the vehicle is equipped with a safety camera.

Link: <https://help.nuvo.solutions/docs/about-the-map-page/using-map-list/> Last Updated: June 4th, 2019

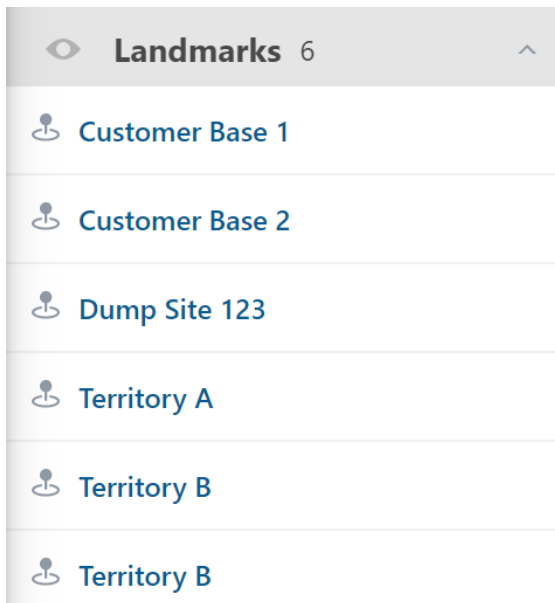


Click on the Vehicle ID to see the selected vehicle's **Vehicle Card**.



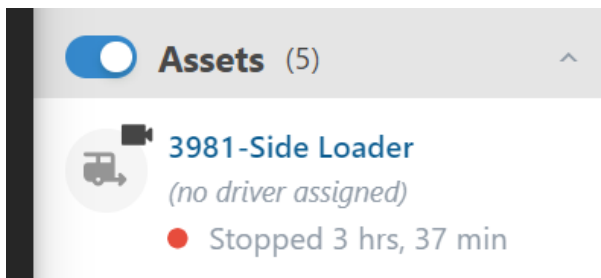
Using the Landmark List

The Landmark List displays all landmarks, or filtered landmarks if you've filtered the map by landmark. You can click on a landmark to open the corresponding **Landmark Card** to edit/view landmark details and/or view Trip History within the landmark.

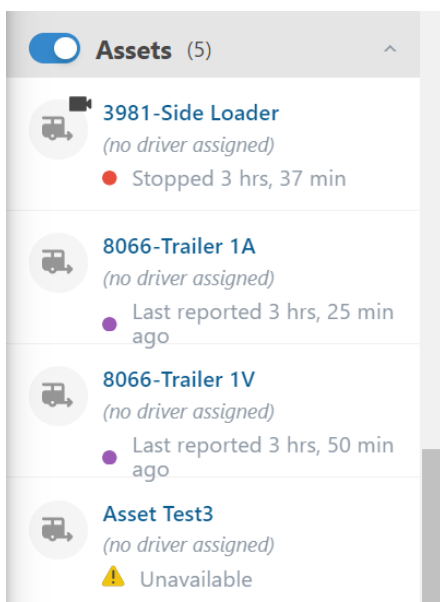


Using the Asset List

The Asset List displays all assets, or filtered assets if you've filtered the map by asset. Assets are displayed by Asset ID and shows at-a-glance information such as assigned driver (if applicable), current status, and the time the asset has been in the status or speed (if moving). A camera icon indicates that the vehicle is equipped with a safety camera.



Click on an asset to open the corresponding Asset Card to edit, dispatch, view details, and more.



Using the Driver List

The Driver List displays all drivers, or filtered drivers if you've filtered the map by driver. Select a driver name to display their Driver Card details, including name (first and last), assigned vehicle (if applicable), reference ID, contact information, and camera events (if applicable). You can also edit driver details from the **Driver Card**.

