
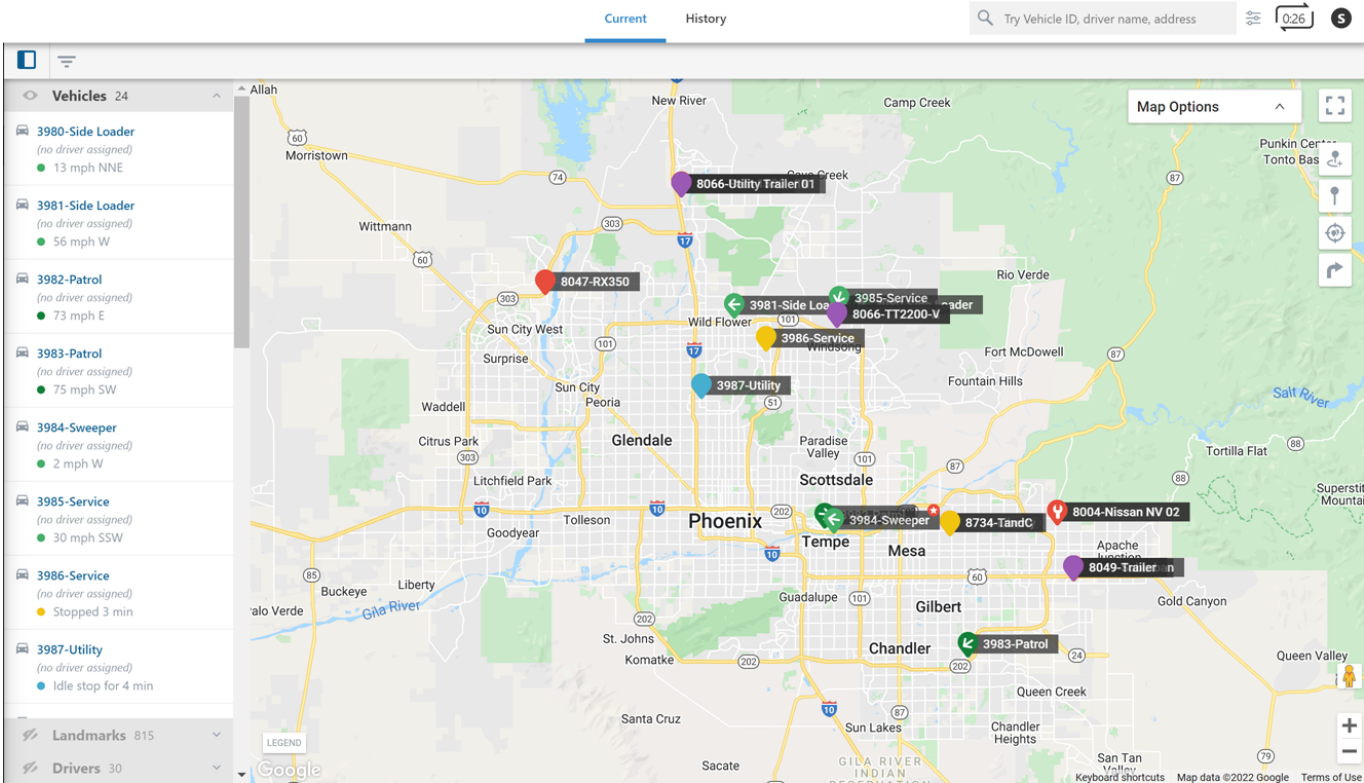


The Map transforms your workspace into a single 2D map with quick access to vehicle, driver, and landmark management. The 2D Live map shows live updates of all vehicles. Live updating means that individual vehicle locations/statuses refresh as they occur. Other 2D map options show collective updates when the entire map refreshes (usually every 30 seconds).



**Note.** Driver feature is only available to Enterprise customers. If are interested in learning more, please contact your Account Manager.



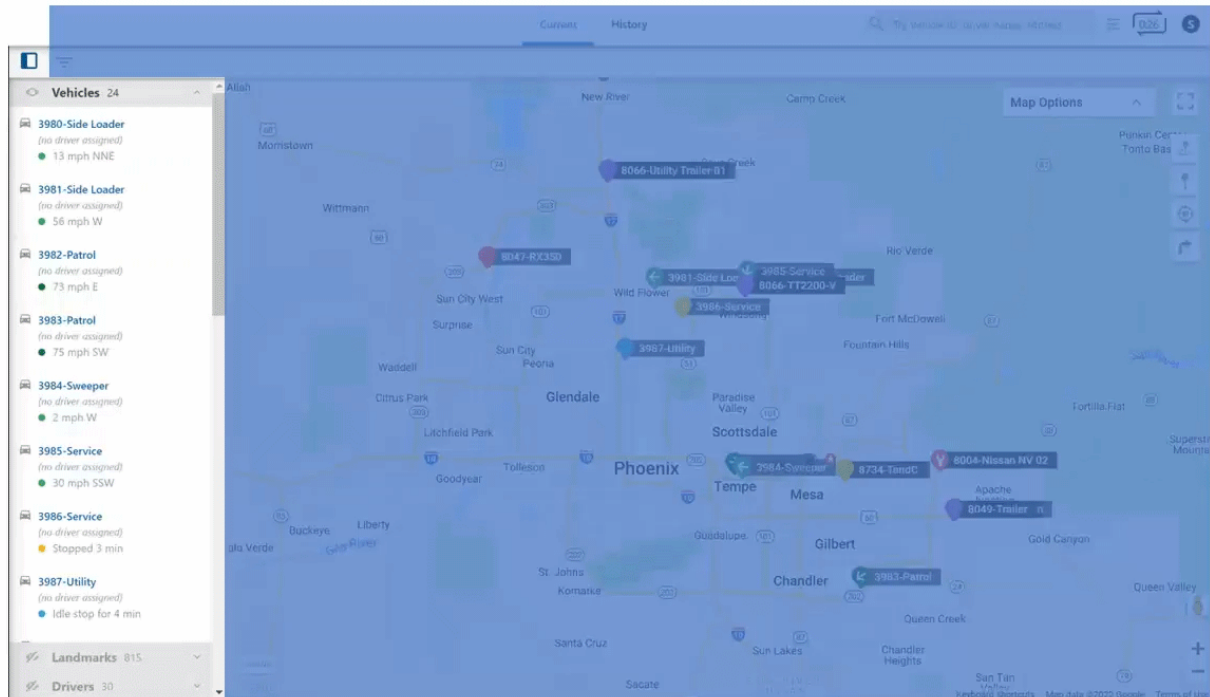
## Map Options

Map options allow you to filter lists, enable Full-Screen view, adjust zoom level, toggle display (Street Map or Satellite Imagery), display terrain, show Street View, and more. Please see the table below to see a complete list of map options and their functions.

# About the Map Page

Link: <https://help.nuvo.solutions/docs/about-the-map-page/> Last Updated: November 13th, 2018

1



The Map has the following options:

Number	Option	Description
1	Lists	View drivers, vehicles, and landmarks in your fleet.
2	Filter	Filter the map by vehicle, hierarchy, group, vehicle status, landmarks, and/or Drivers. You may also filter the map to hide unavailable/out-of-range vehicles.
3	Toggle Panel	Click this button to show or hide the lists panel.
4	Map Type	Switch between Current or History map.
5	Search	Use this field to search the map by vehicle, driver, landmark, user, or address..
6	Map Preferences	Click the preferences button to adjust cluster levels, trail threshold, vehicle labels, map markers, and weather opacity.
7	Map Refresh Timer	If you have <b>Precision Updates</b> enabled on your Account, the timer allows you to see when your map is set to be updated with vehicle locations next.
8	Profile Button	Includes name of user, username, account name, and tier. You may also log out of the Portal by clicking <b>Logout</b> .

# About the Map Page

Link: <https://help.nuvo.solutions/docs/about-the-map-page/> Last Updated: November 13th, 2018

Number	Option	Description
9	Map Options	Click Map Options to show and select multiple map styles, data source, and map overlays.
10	Full Screen	Expand the map fullscreen. To exit fullscreen, press the Escape (Esc) button on your keyboard.
11	Map Controls	Use the Map Controls to interact with the map the way you prefer.
12	Street View	Drag the yellow peg man to a location on the map for street-level imagery. (Click the X in the upper-right corner to exit.)
13	Zoom in/out	Click + to zoom toward the center of the map. Click - to zoom outward from the center of the map. You can also use the mouse wheel.
14	Legend	Use the Legend tool to view the meaning of color-coded icon shapes present on the map.