


Link: <https://help.nuvo.solutions/docs/about-the-dashboard-page/> Last Updated: November 3rd, 2020

With the Dashboard page, you can view and interact with your customized dashboard(s) created in the Classic Portal without leaving the New Portal.

Note. To configure or edit a dashboard, you must return to the Classic Portal by clicking on the **Edit** icon () at the top right-hand corner of the browser window.

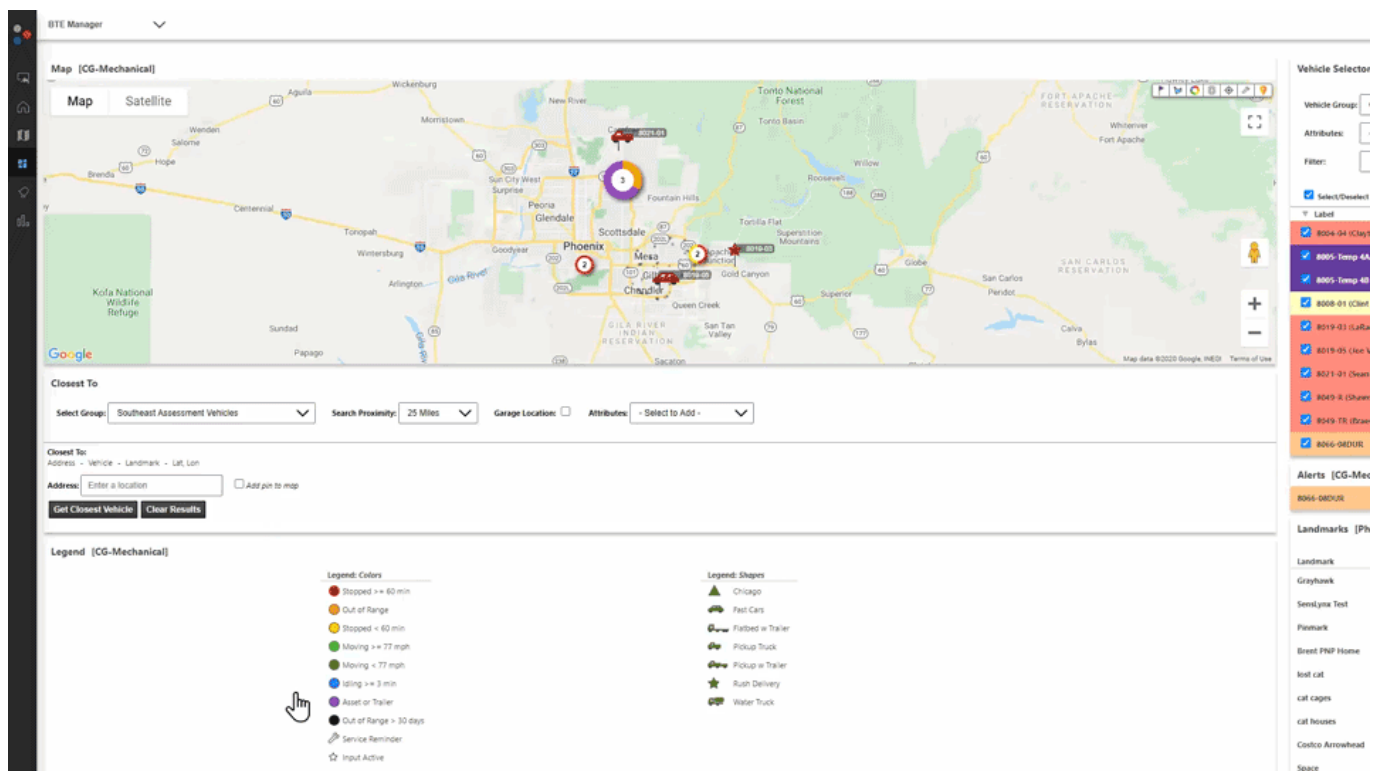
Viewing a Dashboard

If you have access to or have created multiple dashboards, you can view each dashboard by using the drop-down selector. Otherwise, if you only have access to or have only created one dashboard in the Classic Portal, the Dashboard page displays your one available dashboard.

How to select a dashboard to view:

1. Click on the Drop-Down icon.
2. Use the scroll bar to scroll until you see the Dashboard you would like to view.
3. Click on the name of the Dashboard you would like to view.

The selected Dashboard loads on the screen.



Interacting with the Dashboard

You can interact with the dashlets on your dashboard from the New Portal just like you would from the Classic

Portal.

Note. Interacting with some dashlets may open a new browser tab opened to the applicable section of the Classic Portal so that you may drill down to the data you need.

The way you interact with a dashlet varies from dashlet to dashlet. We are providing you with an example of interacting with the Map dashlet below.

How to interact with the Map dashlet:

1. Just like in the Classic Portal, you can click on a vehicle on the map dashlet to view vehicle details, change the map to Satellite or Map (with or without Terrain), view traffic, use the peg-man to see street view, drop a pin, and more.

