

Landmark groups are used to organize your landmarks based on logical or geographical separations that make sense to your business.

You can apply landmark groups to relevant reports and alerts (e.g., idling within certain Dispatch Centers, etc.).



Note. System landmarks are those that are automatically created and cannot be deleted. Each time a portal user creates a landmark, it automatically gets added to a system group called, "Landmarks by [username]."

EXAMPLE

Company XYZ wants to encourage drivers to turn off their engines while inside dispatch centers. The owner created landmarks for each dispatch center and now wants to set up an alert whenever vehicles are inside one of those locations.

Add a Landmark Group

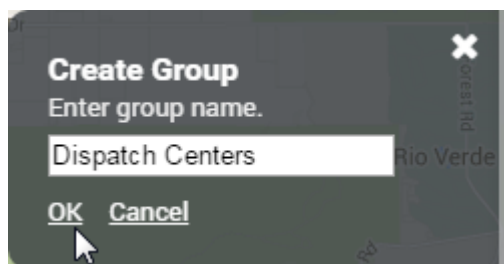
You can create any number of landmark groups. For each group you create, you can assign landmarks and users to that group. Landmarks and users can belong to more than one landmark group.

► To create a new landmark group and set landmark membership:

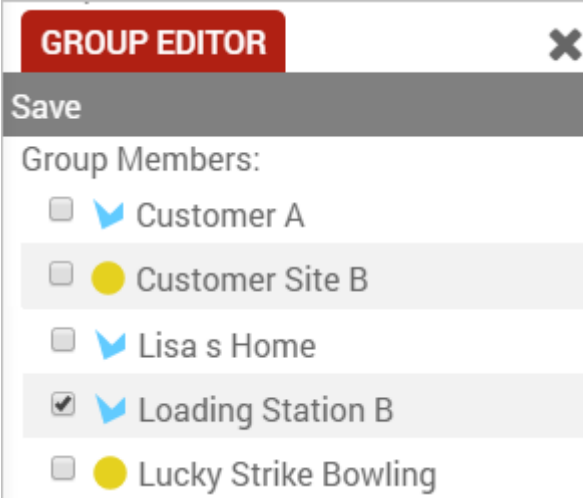
1. From the menu, click **Landmarks**.
2. Click the **Groups** tab.
3. Click **Create Group**.



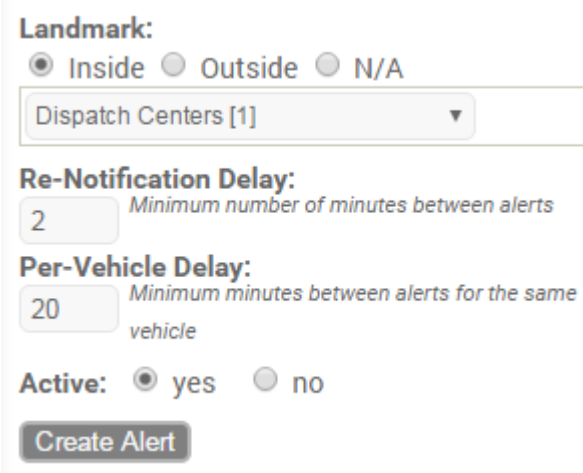
1. Enter a group name, and click **OK**.



1. In the Group Editor, select the landmark(s) that you want to add to the group, and click **Save**.



The landmark group appears in the Landmark drop-down when configuring relevant reports and/or alerts.



Groups allow you to easily filter reports, maps, and dashlets. Groups also determine which users of your portal account can view certain landmarks.



Note. System landmarks are those that are automatically created and cannot be deleted. Each time a portal user creates a landmark, it automatically gets added to a system group called, "Landmarks by [username]."

EXAMPLE

Company XYZ has several dispatch centers in Arizona and Minnesota. The owner created landmarks for each dispatch center and now wants to report on stop/idle times of vehicles, separated by Arizona and Minnesota dispatch centers. He also wants to toggle on/off landmarks when viewing maps.

Add a Landmark Group

You can create any number of landmark groups. For each group you create, you can assign landmarks and users to that group, which determines which users can see the landmarks in that group. Landmarks and users

can belong to more than one landmark group.



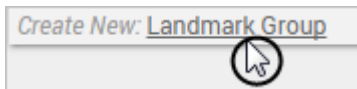
Tip! You can also create landmark groups from the [Map Dashboard](#).

► To create a new landmark group and set landmark membership:

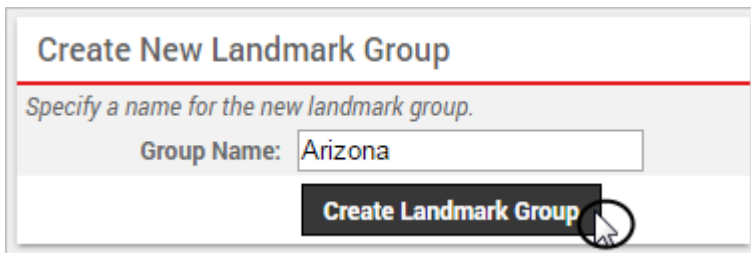
1. Hover over the **Mapping** menu, click **Landmark Groups**, and click **Open**.

The Landmark Groups page opens in a new browser tab.

1. At the bottom of the Landmark Groups grid, click **Landmark Group** next to Create New.



1. In the New Landmark Group window, enter a name for the group.
2. Click **Create Landmark Group**.



A new landmark group is added to the Landmark Groups grid.

1. From the User List grid, decide which users should have access to this group of landmarks. For each user, set preferences for their ability to Rename, Add/Remove, or Re-Share, and then drag-and-drop a user to the new landmark group. In the Company XYZ example, the owner wants to give his Arizona service manager (Brendan) access to the Arizona landmarks. Brendan can add or remove landmarks to/from the group, but he cannot rename or share the landmark group.

Landmark Groups

Edit by dragging items from the 'User List' or the 'Landmark List' and dropping on a Group in this list.

Search Group: * for wildcard

Shared: ☐ User-Default: ☒ **filter**

Arizona	brendan			
---------	---------	--	--	--

Create New: [Landmark Group](#)

User List

Drag and drop on landmark group to assign.

Drag Action: ☒ Add to group ☐ Remove

Access: ☐ Rename ☒ Add/Remove ☐ Re-Share

Page: 1-20 / 21-27 Show All 27: ☐

atgdemo	
beynoh	
bgammache	
bgmyrek	
brendan	

Note. You can also click Edit (pencil icon) next to a user's name to add/remove the user to/from multiple landmark groups at once.

1. From the Landmark List grid, drag-and-drop one ore more landmarks to the new landmark group to include it in the group.

Landmark Groups

Edit by dragging items from the 'User List' or the 'Landmark List' and dropping on a Group in this list.

Search Group: * for wildcard

Shared: ☐ User-Default: ☒ **filter**

Arizona	Dispatch Center C			
---------	-------------------	--	--	--

Create New: [Landmark Group](#)

Landmark List

Drag and drop to assign to groups.

Filter by Group:

Search Landmark: * for wildcard

Filter by Polygon: **filter**

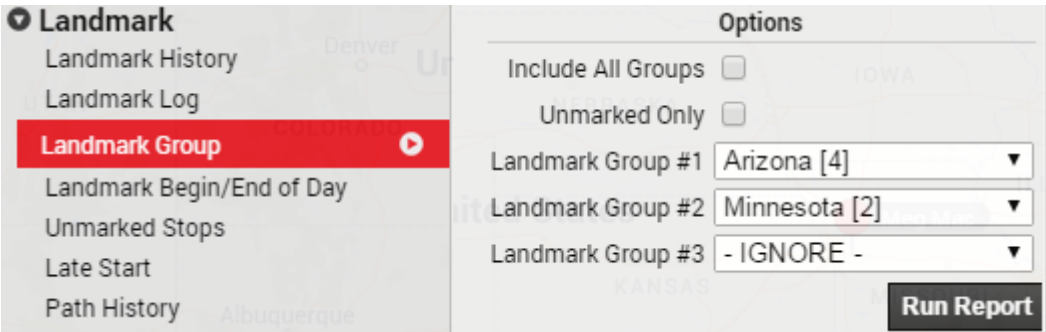
Drag Action: ☒ Add to group ☐ Remove

Dispatch Center A			
Dispatch Center AA			
Dispatch Center B			
Dispatch Center C			

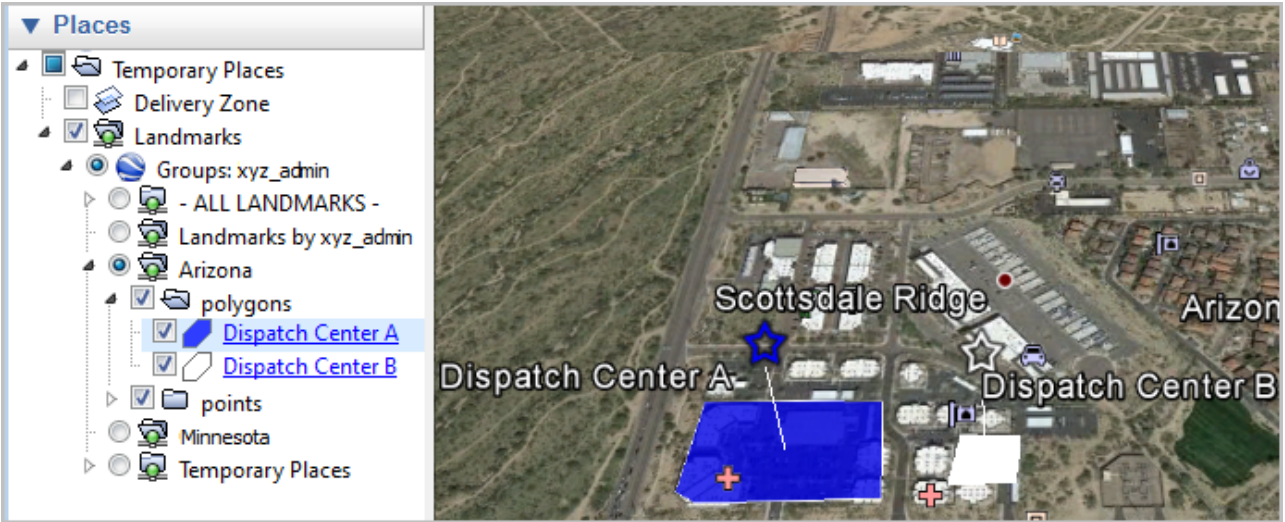
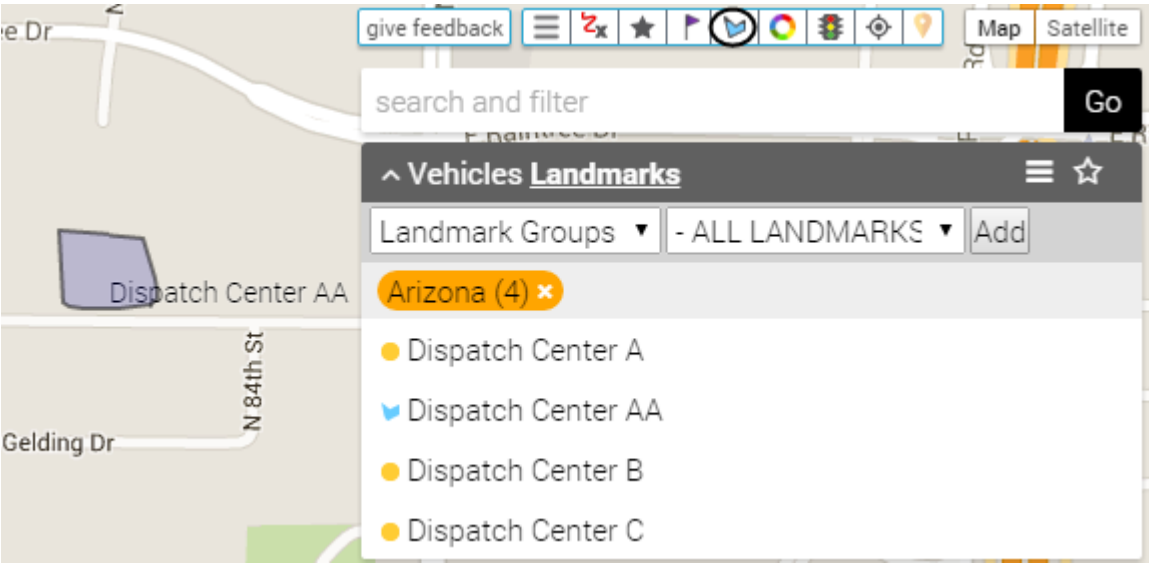
4 landmarks loaded


Note. You can also click Edit (pencil icon) next to a landmark name to add/remove the it to/from multiple landmark groups at once. You can also add existing landmarks to this new group by **editing landmarks** using the mass updater. The new landmark group is also available whenever you **add a new landmark**.


In the Company XYZ example, the owner can now run the Landmark Group report to view idle and stop details per vehicle separated by Arizona and Minnesota landmarks.



Additionally, he can toggle on/off landmarks by group whenever viewing 2D or 3D maps:



 **Note.** To download landmark groups to Google Earth, hover over the **Mapping** menu, and click **3D Download**.

 **Note.** Map settings vary by map. Use the Edit icon on the Map dashlet to set a landmark group. The following example shows all snow vehicles and snow zones:

Link: <https://help.nuvo.solutions/docs/about-landmarks/using-landmark-groups/> Last Updated: April 11th, 2016

