

QUESTION: Several vehicles in my fleet are operated by personnel whose location is sensitive (i.e., law enforcement agents). How can I hide their location on maps and reports but still include them in collective reports or alerts?

The hide location feature is a convenient way to remove a vehicle's visibility from most areas of the dashboard and in maps/reports while still being able to use other benefits of the GPS tracking solution. You can optionally hide an individual vehicle's location (see steps below), or you can use the [Update Vehicle Labels importer](#) to hide vehicle labels for a group of vehicles.

To hide a vehicle's location:

1. From the portal, hover over the **Account** menu, click **Manage Vehicles**, and click **Open**.

The Manage Vehicles and Groups page opens in a new browser tab.

1. Locate the vehicle you want to modify, and click **Edit** (✎).

Vehicle List ↻					
View a full list of your vehicles. Click on values in the Vehicle, VIN, Driver, or Odometer columns to edit the values. ⌵					
Vehicle	VIN	Serial #	Driver	Reported	Odometer
31 FLATBED	1HTSCABM9VH450	433109	FREG, RYAN 600	4 days ago 🔄	230,156 mi. ✎ 🗑️
42 FLATBED	1HTSCABMXYH217	433109	VANS, BRIAN 210	4 days ago 🔄	146,303 mi. ✎ 🗑️

The Edit Vehicle Details page appears.

How do I hide a vehicle's location?

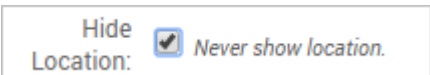
Link: <https://help.nuvo.solutions/deep-dive/how-do-i-hide-a-vehicles-location/> Last Updated: July 27th, 2016

The screenshot displays a web interface for managing a vehicle. It is divided into several sections:

- Device Info:** Shows vehicle details for '31 FLATBED', including device type (GPSI-3900E) and serial number (4331095735).
- Vehicle Location:** A map showing the current location at 608 S Vista Ave, Addison, IL. It includes map controls like zoom and traffic.
- Known Odometer Waypoints:** A table of waypoints with dates and odometer readings. A 'Save Waypoint' button is present.
- Edit Vehicle Details:** A form to update vehicle information. The 'Hide Location' checkbox is checked, with the text 'Never show location.' next to it. A 'Submit Changes' button is at the bottom.
- Vehicle Group Membership:** A table listing vehicle groups and the number of users in each.
- Driver History:** A table showing driver assignments with columns for Driver, Start, End, and Duration.
- Run Time Adjustment:** A section for adjusting run time, showing 'Device Run Time' and 'Run Time (lifetime)'. A 'Submit Change' button is at the bottom.
- Odometer History:** An interactive chart showing odometer changes over time, with a zoom control and a legend.

Tip! If you want to quickly switch to another vehicle from this page, use the **Vehicle** drop-down.

1. From the Edit Vehicle Details grid, select the **Hide Location** check box.



1. Click **Submit Changes**.

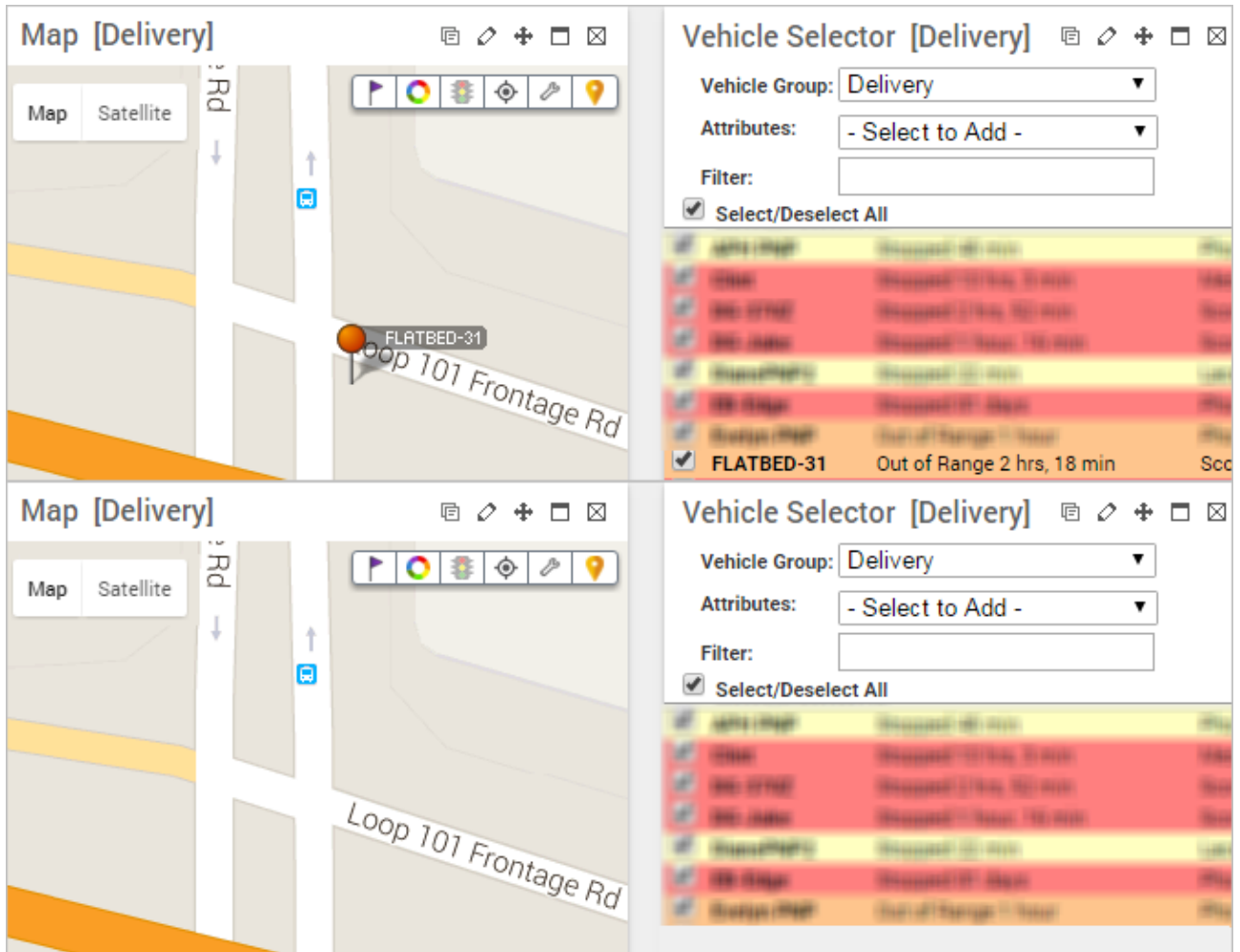
When you refresh the Manage Vehicles and Groups page, the hidden vehicle will appear with a "hidden" indicator (🔒).

1. Go back to the dashboard, and refresh your screen (F5).

The vehicle is removed from various dashlets, such as the Vehicle Selector and Map:

How do I hide a vehicle's location?

Link: <https://help.nuvo.solutions/deep-dive/how-do-i-hide-a-vehicles-location/> Last Updated: July 27th, 2016



The vehicle remains on any relevant reports; however, wherever location data is listed, it will be replaced with "Location Unknown," and the Latitude and Longitude values (if relevant to the report) will be set to 0.0000. Export options, such as 3D mapping, also hide the location.

Activity Detail Report »						
Selected Vehicle: FLATBED-31						
Sunday, March 6, 2016						
Time	Driver	Ignition	Buttons	Latitude	Longitude	Location
6:24:46 AM	Lisson, Kristin			0.00000	0.00000	Location Unknown
6:24:46 AM	Lisson, Kristin			0.00000	0.00000	Location Unknown

This style of permission allows a vehicle to be viewed by a user, but it obscures its actual whereabouts, even in the reports that might otherwise show the location itself.